

**LOW RECEIPT-PAPER SENSOR
UPGRADE KIT
INSTALLATION INSTRUCTIONS**

TDN 07103-00060 May 15 98

COPYRIGHT NOTICE

Copyright 1998 by Triton Systems, Inc. All rights reserved. No part of this publication may be reproduced, transmitted, transcribed, stored in a retrieval system, or translated into any human or computer language, in any form, by any means whatsoever, without the express written permission of Triton Systems, Inc., 522 E. Railroad Street, Long Beach, MS 39560, USA.

Low Receipt-Paper Sensor Upgrade Kit Installation Instructions

Materials needed:

Low paper sensor bracket upgrade kit, includes:

- Retrofitted low paper sensor bracket (1)
- Plastic push rivets (2)
- #4 Screws (2)
- Nylon Spacers (2)
- 1/8" Plastic Spacer Jig (1)

Screwdriver, Phillips head (not included)

Screwdriver, standard head or a metal shim (not included)

Installation instructions:

1. Open the upper hood of the unit.
2. Turn off the power by setting the power supply switch to "0".
3. Remove the paper roll by sliding the paper spindle up and out the keyhole slot (see fig. 1).
4. Disconnect the old bracket by removing the sensor bracket screws with a Phillips screwdriver (see fig. 1).
5. Holding the old bracket assembly—taking caution not to excessively pull on the sensor wires—use a screwdriver or metal shim to pop out the white plastic snap rivets and washers (see fig. 2), thus disconnecting the sensor from the bracket.
6. Holding the retrofitted bracket with the bracket arm pointing down and to the left (see fig. 3), place the sensor face down in the upper slot (see fig. 4).
7. Keeping the sensor in the bracket slot, hold them so that a push rivet can be inserted through both holes from the bottom up (see fig. 5). Push the heads of the rivets until they click into place and the sensor is secure on the bracket.
8. Insert one of the screws (from the topside) through the hole in the bracket arm. Place one of the plastic spacers over the end of the screw. Repeat this using the oblong slot in the bracket. Thread the screws into the existing tapped holes in the Paper Bracket finger tight only. (The proper order for this configuration should be Screw head-Low Paper Bracket-Nylon Spacer-Paper Bracket.)
9. Replace the paper spindle without the Paper Roll (see fig. 6), insuring the paper spindle is pressed securely into the keyhole slot. It is possible that the textured coating on the Paper Bracket may be thick enough to prevent the paper spindle from seating easily in the keyhole slot, and this would affect the bracket's positioning. If this occurs, it may help to twist the spindle as it is pulled into the slot (see fig. 6). If there is any question as to whether the spindle is seated completely, use a pair of pliers to squeeze from the center of the spindle to the edge of the bracket (see fig. 7).
10. Position the paper sensor bracket by placing the plastic jig between the paper spindle and the edge of the bracket (see fig. 8). (The farther from the Paper Spindle the bracket is positioned, the more paper is left on the roll when the unit registers low paper.)
11. Tighten the securing screws down while holding the jig in place.
12. Once the screws are secure, remove the jig.

13. Remove the Paper Spindle from the keyhole slot, replace the roll of paper, and place back into the Paper Bracket.
14. Turn the unit's power back on, then close and secure the hood.
15. Dispose of the old bracket and snap rivets.
16. Installation is complete.

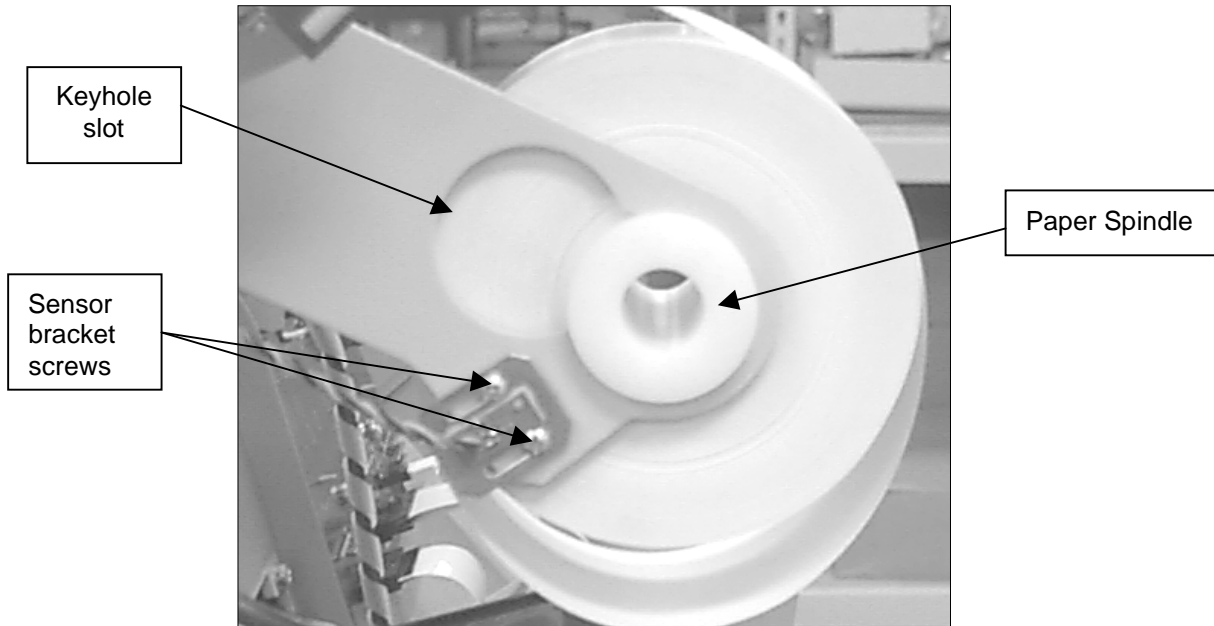


Figure 1

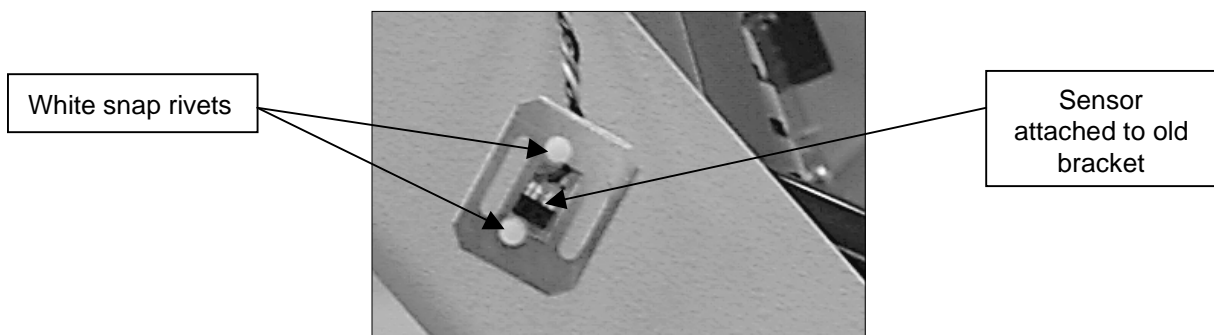


Figure 2

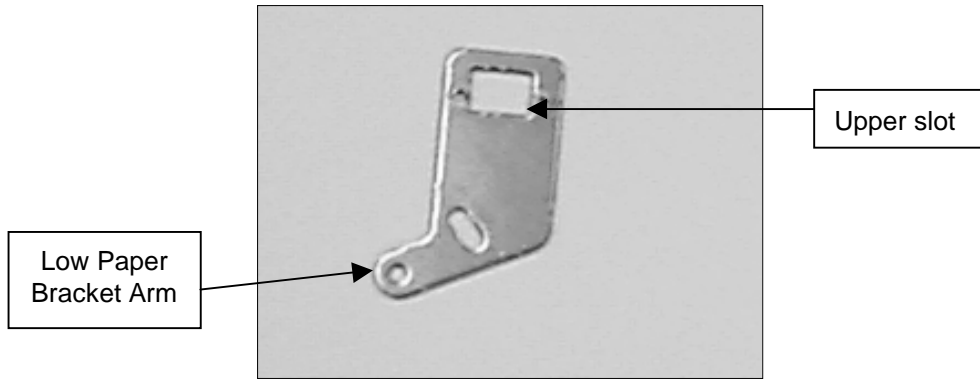


Figure 3
("Top view" of bracket)

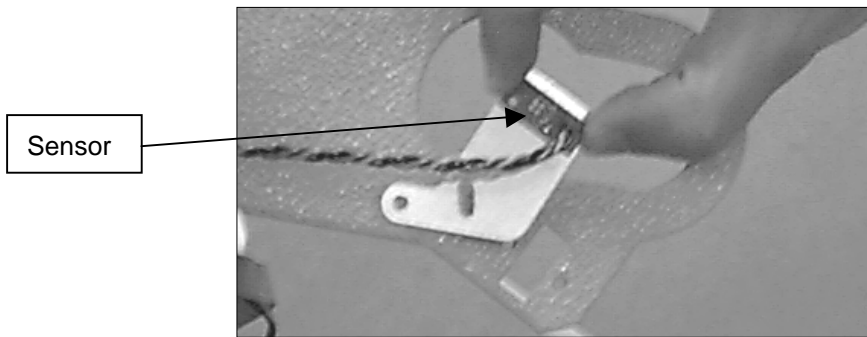


Figure 4

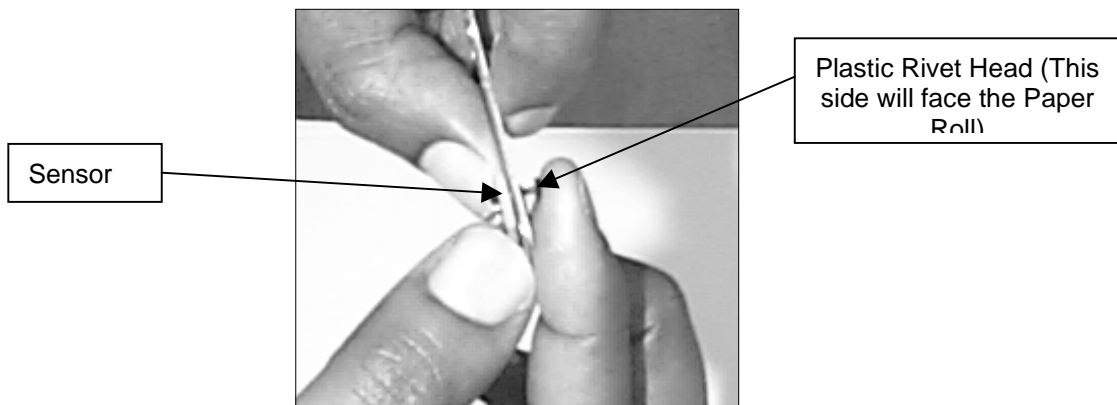


Figure 5
(As viewed from the side)

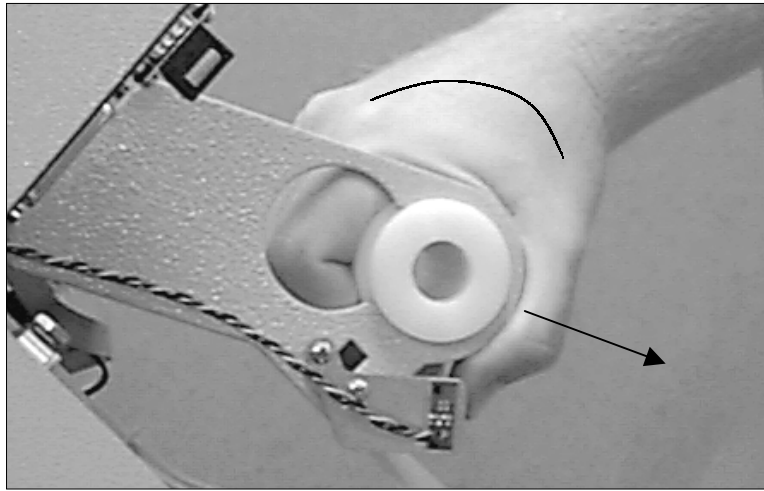


Figure 6

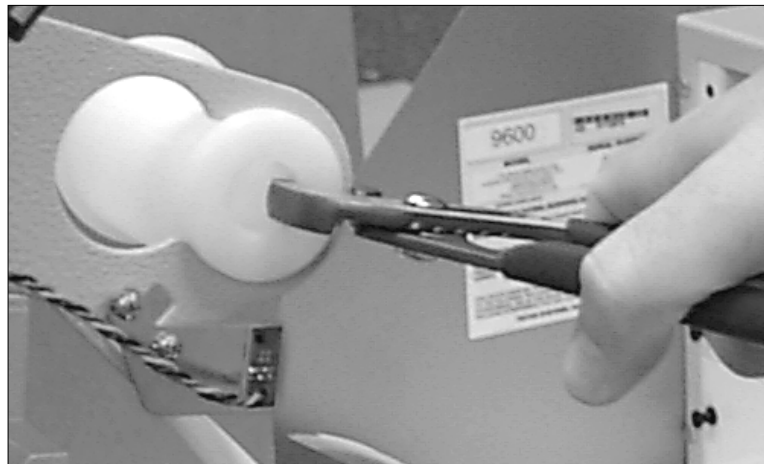


Figure 7

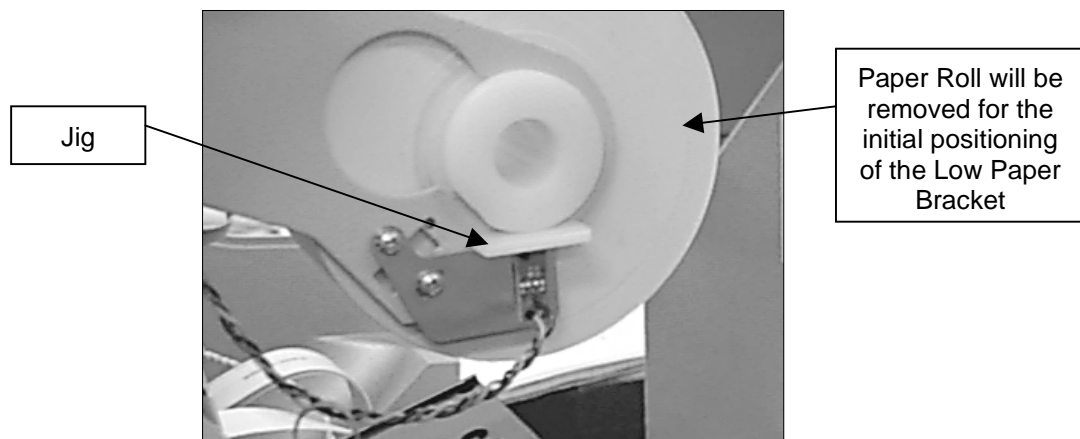


Figure 8