

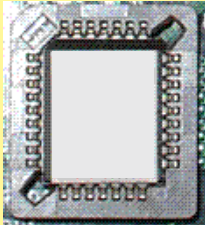
FT5000 REAR SERVICE PANEL (RSP) - PLCC EPROM REPLACEMENT

*Note: If the unit is ON, enter **MANAGEMENT FUNCTION > SYSTEM PARAMETERS > SHUT DOWN THE TERMINAL**. When prompted on the screen, open the sleeve cabinet and turn the power switch on the power supply to the OFF (0) position.*

TOOL REQUIRED: PLCC Chip Extractor / ESD Wrist Strap	
FT5000 RSP - PLCC Eprom Replacement Kit (P/N 06200-08133)	
Part Number	Description
09130-01050	Eprom, RP-1.03
* 05200-10033	RL/FT/RT Software Upgrade CD
* Refer to document 07100-00101 on CD	



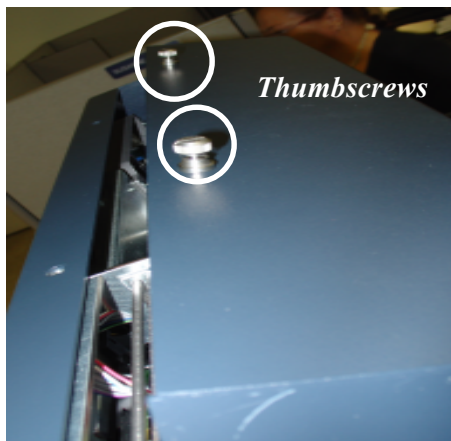
PLCC chip extractor



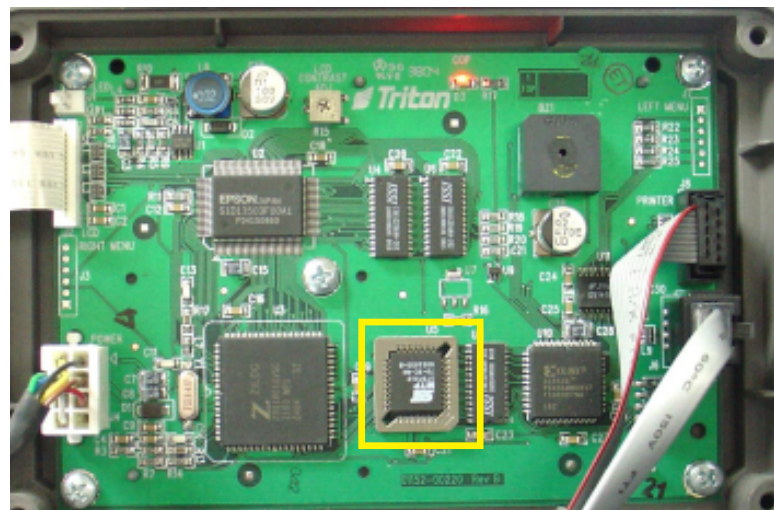
PLASTIC LEADED CHIP CARRIER (PLCC)

PLCC chips are square and click into a socket. Getting them out of said socket is challenging without a PLCC chip extractor. You can do it with a jeweller's screwdriver, but it's somewhat nerve-wracking. A PLCC puller clips onto opposite corners of the chip and pops it out with one squeeze. Available at most electronic stores.

- Remove the back panel of the RSP by loosening the two (2) thumb screws located on top of panel and lifting back panel up off its retaining slots.
- Locate the Eprom chip shown in figure below. Using the PLCC chip extractor, remove and replace the Eprom chip with the one included in kit. When inserting the new chip, ensure it's aligned correctly. There is a beveled corner on both the chip socket and chip itself. Gently seat the chip fully into the socket.



Loosen thumb screws and remove back panel.



EPROM chip location.

- Reinstall the back panel of the RSP and tighten the two (2) thumb screws.