



**SERIAL PRINTER CONTROLLER  
REPLACEMENT  
91XX / MAKO / 97XX**

TDN 07100-00127 Oct 09, 2012

**CORPORATE HEADQUARTERS:**

21405 B Street  
Long Beach, MS 39560  
Phone: (228) 575-3100  
Fax: (228) 575-3101

**COPYRIGHT NOTICE**

© 2012 Triton. All Rights Reserved. TRITON logo is a registered trademark of Triton Systems of Delaware.

## **Document Updates**

Oct 09 2012 Original

**PURPOSE**

This guide covers the steps for replacing your current printer controller with a new model. This procedure includes a list of all tools and hardware necessary for the replacement as well as the steps involved.

**SCOPE**

This procedure applies to all service personnel involved in the process of maintaining or converting Triton ATMs.

**APPLICATION**

This conversion kit applies to Model 91xx, Mako, and 97xx units.

**REQUIRED PARTS AND TOOLS**

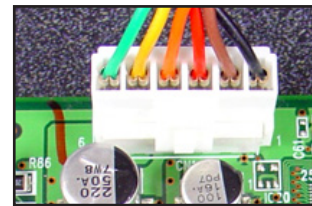
**Kit P/N 06200-18182**

This kit replaces kit P/N 06200-08182 which introduced the printer controller (P/N 01500-00119) with a newer power connection. It also included the replacement power cable. The original printer controller (P/N 01500-00109), shown on the left below, had the old type connection.



Previous

01500-00109 power connection

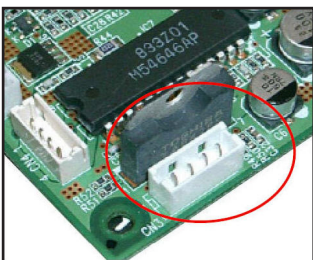


New

01500-00119 and 01500-10119 power connection

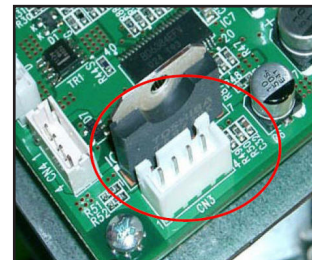
This kit replaces the original printer controller (P/N 01500-00109) and subsequent printer controller (P/N 01500-00119) with P/N 01500-10119 (jumpers included) in model 91xx, MAKO, and 97xx units. It also includes a replacement power cable. A jumper power cable is provided for the 91xx and Mako units. Route the new power cable in the same manner as the old cable.

In addition to the newer power connection, the newest printer controller has a new cutter connection. The supplier of printer assemblies has replaced a connector on their printer controller and cutter due to a connector going end of life. The change is not backwards compatible and parts are not available to connect older controller boards with new cutters, or new controller boards with old cutters. The new connector is a JST connector. This kit includes the new cutter and cutter extension cable for the JST connection



Previous

01500-00109 and 01500-00119 cutter connector



New

01500-10119 JST cutter connector

## *PRINTER CONTROLLER REPLACEMENT PROCEDURES*

---

<b>TOOLS REQUIRED</b>	#2 philips screwdriver / nut driver or open end wrench 11/32"	
<b>KIT 06200-18182</b>	Field Replacement Kit, Serial Printer Controller w/Configuration Dip Switches and Power Cable	
<b>Item</b>	<b>Description</b>	<b>Qty</b>
01500-10119	Printer Controller DIP Switches 60/80mm Printers  115.2K Baud Firmware-28000-00063 v1.18 - JST cutter connector	1
01060-00872	Connector Jumper 2-Position Jumper Shunt for .100 inch 2-Pin PCB Connector Tin ROHS	1
09120-07063	Cable, printer power, 76"	1
03072-00015	6 Inches TY Wraps ROHS	10
28000-00063	Ver 1.18, PT230P01, 23, Apr.2007 Firmware for Seiko printer ctrls IF2301, IF2303	1
09120-07109	Serial printer power adapter cable	1
09800-10103	Printer Cutter, 60mm Thermal Printer ROHS - JST cutter connector	1
09120-10195	Cutter extension cable, JST connector	1
07100-00127	Printer Controller Configuration Guide	1

## REMOVE AND REPLACE PROCEDURES

Before proceeding, follow these steps to remove power from the ATM:

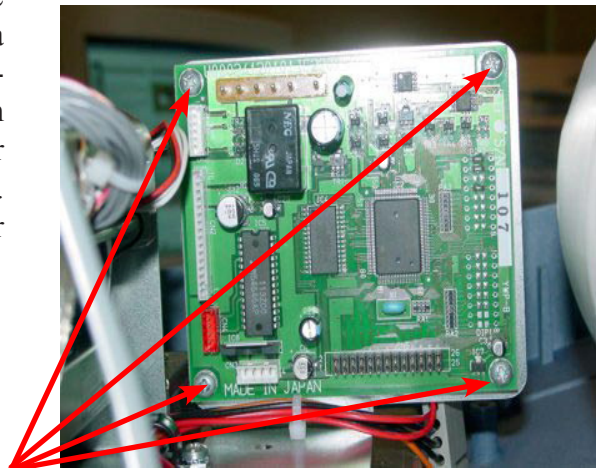
Enter **Management Functions > System Parameters > Shut Down the Terminal**. When prompted, unlock and open the ATM control panel and turn power **OFF (0)** on the ATMs power supply.

**OR:** Unlock and open the ATM control panel. Turn the power switch to the **OFF (0)** position.

If possible, unplug the ATM power cord at the wall outlet.

1. Refer to the applicable service manual for your unit, or to the representative steps below, to remove and replace the printer controller and/or the cutter.

All printer controllers are mounted in much the same manner. Your printer controller may have a protective cover. Ensure it is in place before re-powering the unit. Refer to the example shown for the basic steps needed to remove the printer controller. Installation is the reverse of removal. Retain all hardware. Handle the new controller with care, it is an Electro-Static sensitive device.

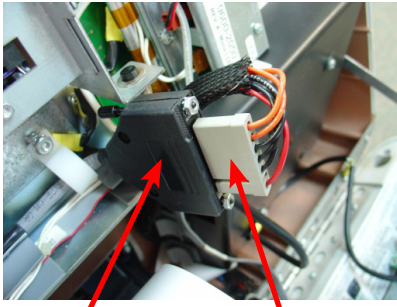


- Ensure power is removed from the unit.
- Remove the protective cover if applicable.
- Disconnect all cables. Make a connection chart if necessary.
- Remove the 4 (four) screws attaching the controller to its bracket (representative)
- Set dip switches and jumpers on new controller.
- Installation is the reverse

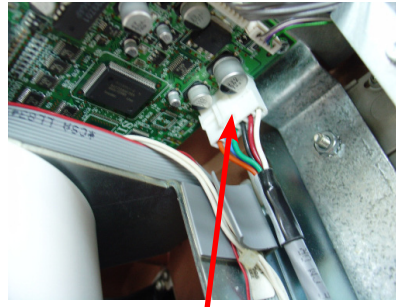
2. Remove the old cutter and install the new cutter (**09800-10103**) with the JST connector.
3. Replace the existing cutter extension cable with the new (**09120-10195**) and route in the same manner as the old cable. Ty wrap as necessary to ensure there is no interference with the operation of the printer, especially the paper roll and feed mechanism.
4. Replace the existing power cable with the new (**09120-07063**) cable and route in the same manner as the old cable. Ty wrap as necessary to ensure there is no interference with the printer paper, feed mechanism, or any other moveable part.
5. Refer to the pictures on the next page for illustrative routing of the extension cable on Mako and 91xx units.
6. Ensure any other cables removed from the old printer controller are connected properly to the new printer controller.
7. Refer to the charts on the last page to ensure your controller's DIP switches and jumpers are configured properly for your unit.
8. Ensure all cables are secure and connected properly before powering on the unit. Load the printer with paper and test the operation of the unit.

## PRINTER CONTROLLER REPLACEMENT PROCEDURES

### Extension cable installed, Mako example:

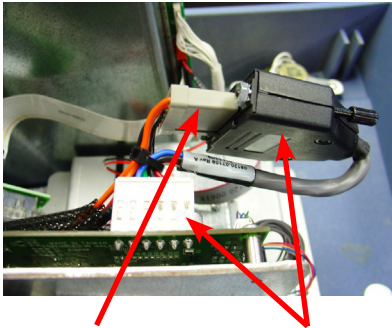


Extension cable connector    Original Printer controller cable connector

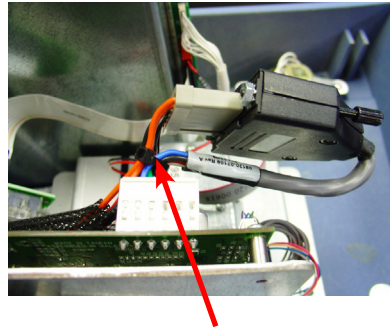


New printer controller cable connector

### Extension cable installed, 91xx example:



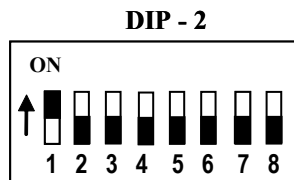
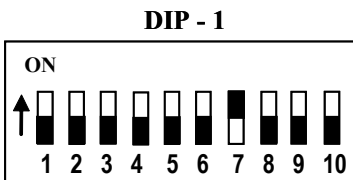
Original Printer controller cable connector    Extension cable connectors



Install ty wrap

## CONFIGURATION

DIP Switch Configuration - 91xx/97xx/MAKO	
DIP Bank 1	DIP Bank 2
#7 switch ON, others OFF	#1 switch ON, others OFF



Jumper Configuration Table			
Product	JP1	JP3	JP4
ALL	Shorted	Pins 1 - 2	Pins 1 - 2
* All other jumpers are left open.			

