



**RL2000 & RL5000  
AC POWER CORD  
BRACKET  
INSTALLATION**

TDN 07103-00199 April 21, 2010

**CORPORATE HEADQUARTERS:**

21405 B Street  
Long Beach, MS 39560  
Phone: (228) 575-3188  
Fax: (228) 575-3200

**COPYRIGHT NOTICE**

© 2010 Triton. All Rights Reserved. TRITON logo is a registered trademark of Triton Systems of Delaware, LLC

**Document Updates**

April 21, 2010 Original

**TABLE OF CONTENTS**

**INTRODUCTION**                    **PURPOSE, SCOPE, APPLICATION, PARTS & TOOLS.....PG 2**  
**SECTION 1**                        **AC POWER CORD BRACKET INSTALLATION .....PG 3**

**PURPOSE**

This guide covers the steps for installing a support bracket for the AC power cord in the applicable ATMs.

**SCOPE**

This procedure applies to all VERIFIED TRITON TRAINED service personnel involved in the process of maintaining or converting Triton ATMs.

**APPLICATION**

This bracket is used in any configuration that utilizes dispenser slide brackets, (TDM, NMD50, SDD) in the RL2000 and RL5000. Contact Triton Technical Support for further verification.

**REQUIRED PARTS AND TOOLS**

<b>TOOLS REQUIRED</b>	Phillips screw driver, adjustable wrench, side cut pliers	
<b>KIT 06100-08140</b>	RL5000 Vault	Item 1,4,5,6
<b>KIT 06100-08141</b>	RL5000 Business Cabinet	Item 2,4,5,6
<b>KIT 06100-08142</b>	RL2000 & RL5000 Deep cabinet	Item 3,4,5,6

<b>ITEM</b>	<b>PART NUMBER</b>	<b>DESCRIPTION</b>	<b>QTY</b>
1	03011-02048	RL 5K Vault Power Cord Holder	1
2	03011-02047	RL 5K Cabinet Power Cord Holder	1
3	03011-02046	RL2K/5K Deep Power Cord Holder	1
4	02054-00169	Screw #8-32 3/8 Inch Pan Phil Head w/Ext Tooth Wash  ROHS	2
5	03072-00015	6 Inches TY Wraps ROHS	2
6	07103-00199	Power Cord Holder Instructions	1

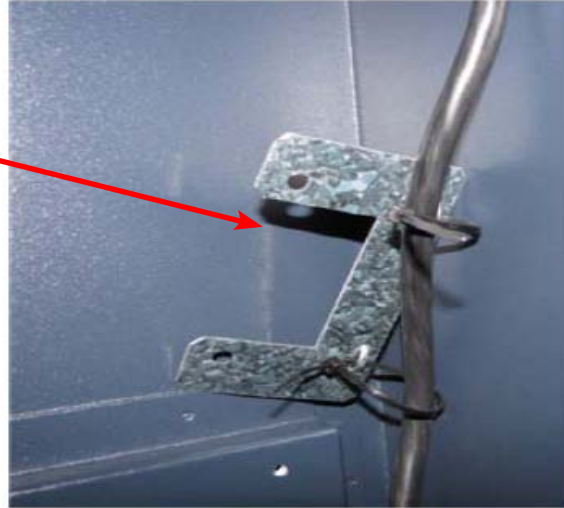
# SECTION 1

## INSTALLATION PROCEDURE

- Follow the appropriate procedure to shut down your particular ATM and remove power.

### RL 2000 with NMD example

- Remove your particular dispenser type. Disconnect cables and set it aside.
- Remove the dispenser tray from the slides.
- Loosely attach the power cable to the bracket with the ty wraps provided. Inspect the power cord for chaffing and repair as necessary.
- Remove the mounting screws from the rear of left side slide assembly.
- Loosen the remaining screws holding the slide assembly, but do not remove.



- Slide the bracket behind the slide assembly and reattach the slide assembly with the longer screws provided. Tighten the remaining slide assembly screws.



Figure 8a

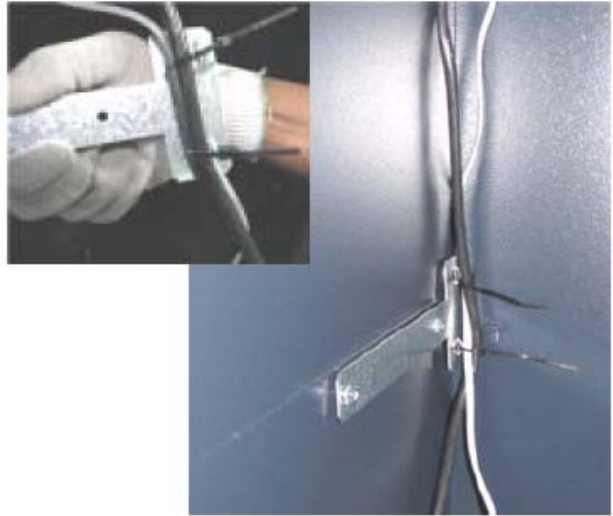


Figure 8b

Pull the ty wraps snug to secure the power cord. Cut off any excess as necessary.

## RL 5000 with SDD example

- If using this style of bracket, the left side slide assembly must be removed.
- The bracket is then installed and secured loosely. Inspect the power cord for chaffing and repair as necessary.
- The slide assembly is then slid behind the bracket, and then secured.
- Pull the ty wraps snug to secure the power cord.
- Cut off any excess as necessary.



## All Units

Reinstall the tray and dispenser.

Slide the assembly in and out to ensure there is no contact with the power cord.

Power up the terminal and return to operation.