



CLOSE OUT PLATE KIT

TDN 07103-08210 August 23, 2014

Corporate Headquarters

21405 B Street
Long Beach, MS 39560
Phone: (800) 259-6672
Fax: (228) 575-3101

COPYRIGHT NOTICE

© 2014 Triton. All Rights Reserved. TRITON logo is a registered trademark of Triton Systems of Delaware, LLC

Document Updates

August 23, 2014

Original



Improper grounding may
cause damage to ATM
and/or components.

HOLE CLOSE OUT BRACKET KIT

TABLE OF CONTENTS		
INTRODUCTION		3
SCOPE		3
SECTION 1	SHALLOW CABINET RL1600 MM	1-1
SECTION 2	RL5000 SDD	2-1
SECTION 3	RL5000 NMD50	3-1

INTRODUCTION

This guide covers the steps for rerouting cables for the close out kits. For Shallow cabinets the close out kits are not needed but the cables need to be rerouted.

SCOPE

These procedures apply to all VERIFIED TRITON TRAINED service personnel involved in the process of maintaining or converting Triton ATMs.

SECTION 1

HOLE CLOSEOUT BRACKET KIT

KIT 06200-08211

**RL1600 AND RL2300 SHALLOW CABINET
WITH MM**

HOLE CLOSEOUT BRACKET KIT

REQUIRED PARTS AND TOOLS

TOOLS REQUIRED	USB flash drive
PART REQUIRED 03072-00009	Panduit Adhesive Cable Clip

RL1600 and RL2300 with the following shallow cabinets with MiniMech does not need the hole closeout bracket kit. The cables do need to be reouted per this section.

Model	Cabinet Part Number	Cabinet Serial Number
RL1600	03015-00799 03015-00272 03015-00277	LRL161308354xxxx - LRL161314200xxxx
RL2300	03015-00148	LRL231307242xxxx - LRL231308220xxxx

BEFORE PROCEEDING:

- Ensure all of your Journal Records have been saved to a USB device.
 - Perform a proper management function shut down to remove power from the ATM.
 - Unlock and open the ATM control panel. Turn the power switch to the OFF (0) position. If possible, unplug the ATM power cord at the wall outlet.
 - Open the dispenser area.
-
1. Disconnect the dispenser communications and power cables from the dispenser. Unplug the dispenser power cable from the power supply and remove from the unit. Set aside for reinstallation.
 2. Refer to the applicable service manual for your unit for steps to remove your dispenser. Removal of the dispenser will provide the working room necessary to accomplish the cable routing.
 3. Disconnect the security module communication cable and the power cable from the security module and feed the cable into the upper cabinet.
 4. Connect the dispenser communication cable to the security module. Tighten the thumbscrews to secure the cable.

HOLE CLOSEOUT BRACKET KIT

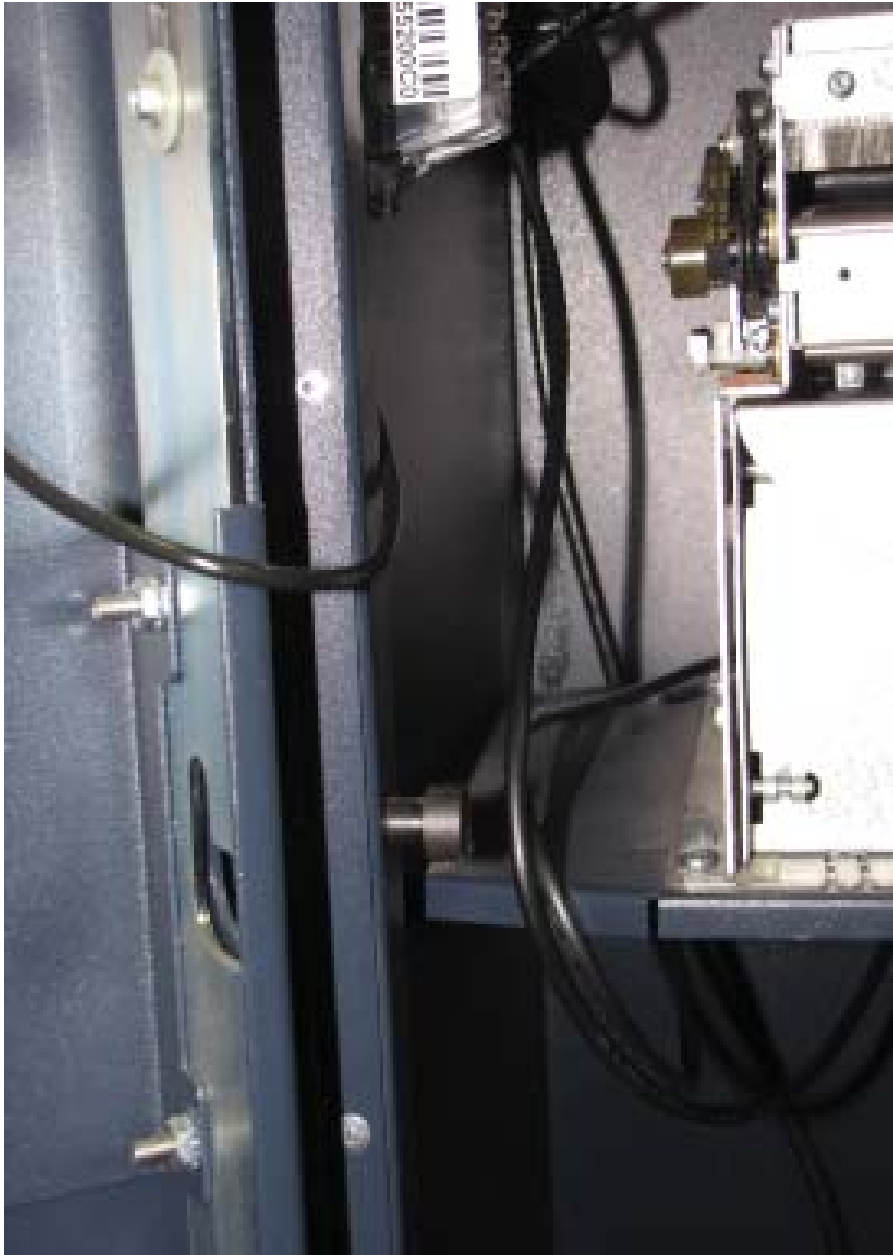
5. Underneath the Mini Mech tray, add the Adhesive Cable Clip to the back, left corner.



6. Run the data cable over the front of the Mini Mech Tray, then through Adhesive Cable Clip under the tray.



7. The data cable then comes back over the front of the Mini Mech tray and plugs into the Mini Mech.



SECTION 2

HOLE CLOSEOUT BRACKET KIT

KIT 06200-08211

**RL5000 CABINET OR VAULT
SDD**

HOLE CLOSEOUT BRACKET KIT

REQUIRED PARTS AND TOOLS

TOOLS REQUIRED	USB flash drive 7/16" hollow shaft nut driver <i>Possible additional tools required:</i> - #2 Phillips screwdriver - Side cut pliers
KIT 06200-08211	Hole Closeout Bracket Kit

Description	Qty
Closeout Bracket	2
1/4-20 Nylon Lock Hex Jam Nut	6
1/4-20 x 1.25 Steel Carriage Bolt	6
Cable Clip 3/4" Round, Screw-In Quick Release ROHS	3
Nut #8-32 Hex Nut Ext. Tooth Washer ROHS	3
Screw #8-32 3/8 Inch Pan Phil Head w/Ext Tooth Wash ROHS	3
6 Inches TY Wraps ROHS	3

For added security measures, Triton recommends the installation of the Security Module Upgrade Kit prior to the installation of the Hole Closeout Bracket Kit.

If the unit has not been upgraded, additional parts may be needed dependent on the cabinet part number / serial number.

RL5000 UPGRADE

****If the unit has been upgraded with the “Electronic Journal to Security Module Upgrade Kit”, skip to the table of contents on page 4 to locate the page number of the work instructions for the correct unit.**

BEFORE PROCEEDING:

- Ensure all of your Journal Records have been saved to a USB device.
 - Perform a proper management function shut down to remove power from the ATM.
 - Unlock and open the ATM control panel. Flip the switch on the power supply to the OFF (0) position. If possible, unplug the ATM power cord at the wall outlet.
 - Open the dispenser area.
-
1. Disconnect the dispenser communications and power cables from the dispenser. Unplug the dispenser power cable from the power supply and remove from the unit. Set aside for reinstallation.
 2. Refer to the applicable service manual for your unit for steps to remove your dispenser. Removal of the dispenser will provide the working room necessary to accomplish the cable routing.
 3. Disconnect the security module communication cable and the power cable from the security module and feed the cable into the upper cabinet.
 4. Connect the dispenser communication cable to the security module. Tighten the thumbscrews to secure the cable.

HOLE CLOSEOUT BRACKET KIT

Use the table of contents below to locate your unit's serial number and page number of the correct installation and cable routing.

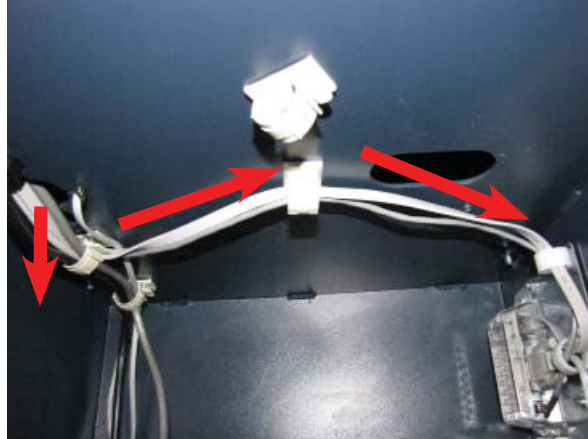
<i>Business Hour Cabinet</i> Part Number	Serial Number	Number of Kits	Page
Xscale			
09700-00000	LRL511403248xxxx-LRL511404295xxxx	1	5
09015-00052/03015-00167	LRL511404296xxxx-LRL511407353xxxx	2	8
X2			
03015-00052/03015-00167	LRL531407323xxxx-LRL531409297xxxx	2	7
03015-00793/03015-00833/03015-01340 03015-00852	LRL531409315xxxx-LRL531414364xxxx Also need to purchase: 09120-07199 - NMD50 Power Cable	2	12

<i>Level One Vault</i> Part Number	Serial Number	Number of Kit	Page
Xscale			
03015-00064/03015-00200/03015-00227	LRL512403329xxxx-LRL512407353xxxx	2	16
X2			
3015-00064/03015-00200/03015-00227	LRL531407323xxxx-LRL531409297xxxx	2	16
03015-00798/03015-00212/03015-00841 03015-00851/03015-01841	LRL532409215xxxx-LRL532414364xxxx	2	20

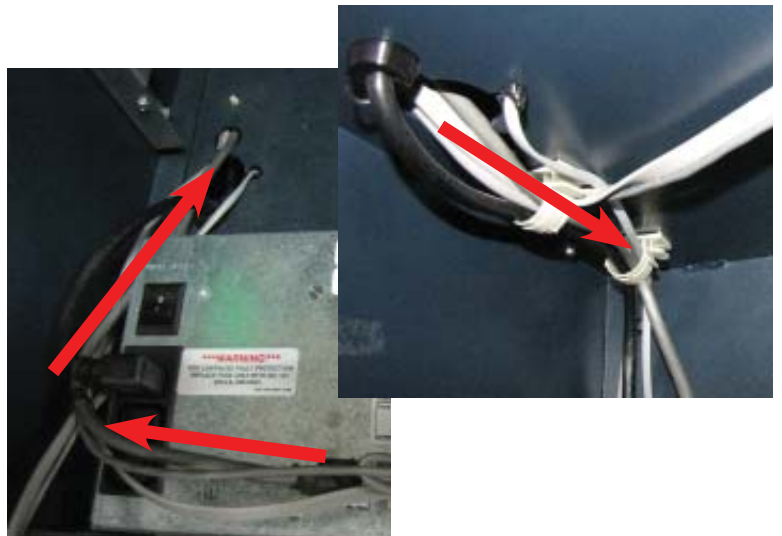
Cabinet # 09700-00000 with an SDD Dispenser

****If the unit has been upgraded to security module, skip to step #8.**

5. Feed the security module power cable and communication cable down through the left opening into the lower cabinet. Route the cables through the upper left front and upper back middle cable clips as shown. Plug the cables into the security module.



6. Obtain the dispenser power cable. Plug the power cable into the unit's power supply in the upper portion of the cabinet. Route the cable through the left hole opening into the lower cabinet. Route the cable through the two left side cable clips.



7. Loop the SDD dispenser communication cable back on itself twice to condense the length of the cable to match the length of the dispenser power cable. TY Wrap the two cables together in two spots as shown. Cut off the excess TY Wraps.



HOLE CLOSEOUT BRACKET KIT

8. Install the 6 bolts into one closeout bracket. Set the closeout bracket in place into the right opening as shown. Ensure the bolts and bracket are sitting flat on the upper cabinet.



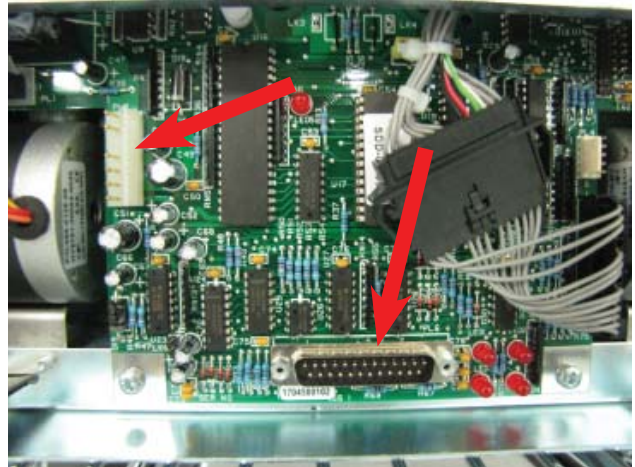
9. Ensure the bolts are not intertwined in the cables in the lower cabinet.



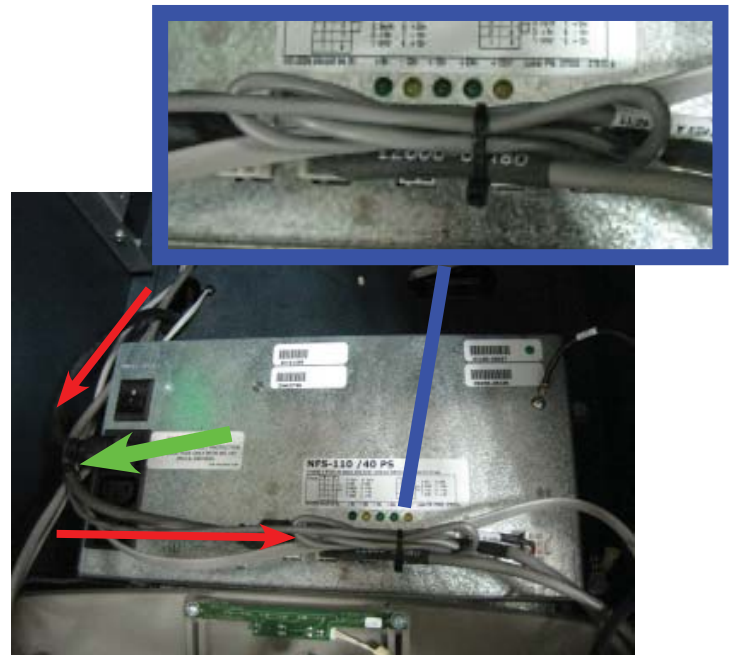
10. Install the second closeout bracket on the bolts in the lower cabinet. Using the 7/16" hollow shaft nut driver, install the 6 hex nuts on the bolts. While tightening, ensure the bolts and bracket are sitting flat in the upper cabinet.



11. Plug the cables into the back of the SDD dispenser and tighten the thumbscrews on the communication cable to secure it. Reinstall the dispenser into the unit.



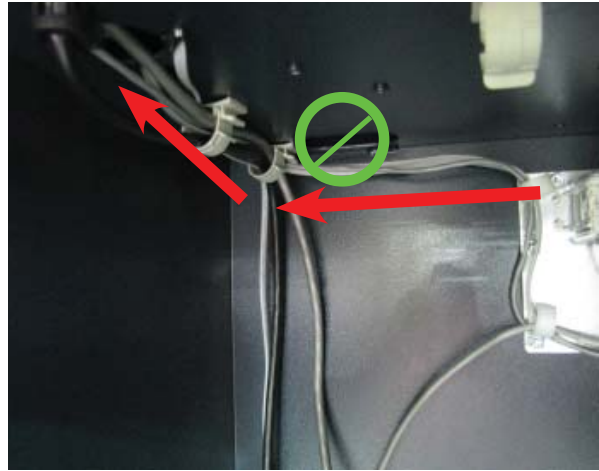
12. Ensure all excess security module power cable and communication cable is pulled into the upper cabinet. Loop the security module power cable back on itself to condense the length of the cable. TY Wrap the cable and cut off the excess (blue box). TY Wrap the cables on the side of the power supply and cut off excess (green arrow).



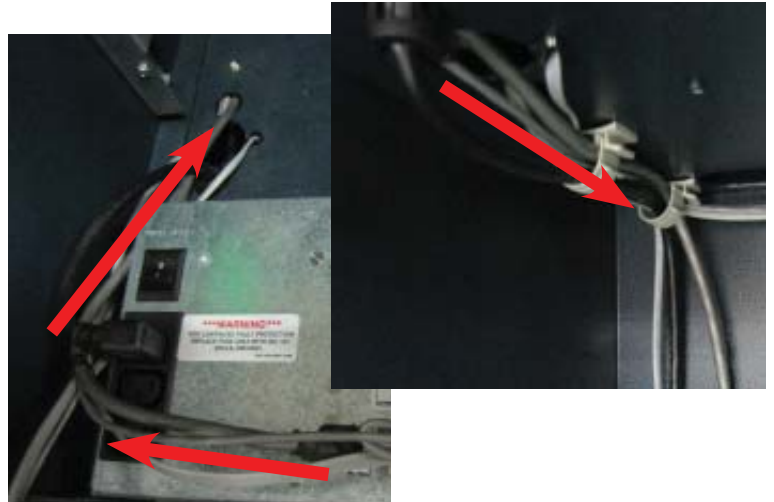
Cabinet # 03015-00052 & 03015-00167 with an SDD Dispenser

****If the unit has been upgraded with a security module, skip to step #8.**

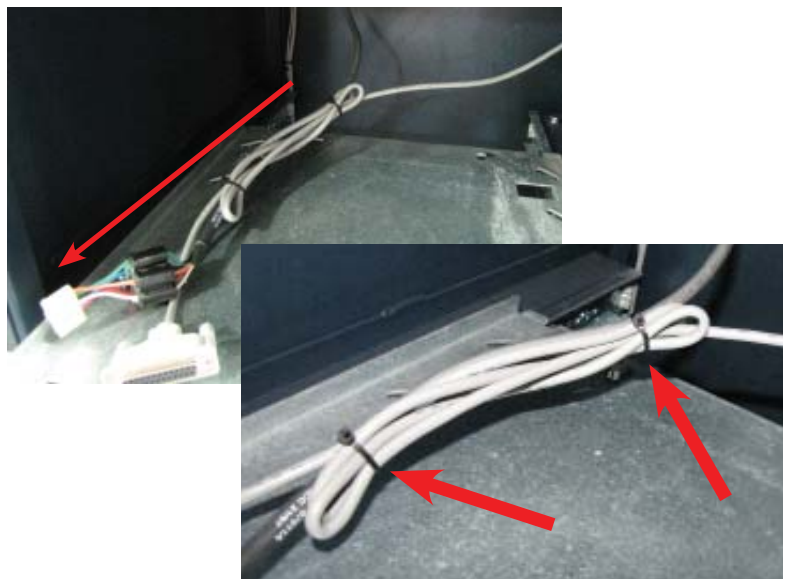
5. Feed the security module power cable and communications cable through the left front opening into the lower cabinet. Route the cables through the left cable clips as shown. Plug the cables into the security module.



6. Obtain the dispenser power cable. Plug the power cable into the unit's power supply in the upper portion of the cabinet. Route the cable through the left hole opening into the lower cabinet. Route the cable through the two left side cable clips.



7. Loop the SDD dispenser communication cable back on itself twice to condense the length of the cable to match the length of the dispenser power cable. TY Wrap the two cables together in two spots as shown. Cut off the excess TY Wraps.



8. Install the 6 bolts into one closeout bracket. Set the closeout bracket in place into the right opening. Install 6 more bolts into another closeout bracket. Set the second closeout bracket into the back opening as shown. Ensure the bolts and brackets are sitting flat on the upper cabinet.



9. Ensure the bolts are not intertwined in the cables in the lower cabinet.



10. Remove the cable clip in the rear left corner of the lower cabinet for easier installation of the closeout bracket.



HOLE CLOSEOUT BRACKET KIT

- 11.** Install the lower close out bracket on the bolts. Using the 7/16" hollow shaft nut driver, install 6 hex nuts on the bolts. While tightening, ensure the bolts and bracket are sitting flat in the upper cabinet.



- 12.** Reinstall the cable clip over the closeout bracket as shown.

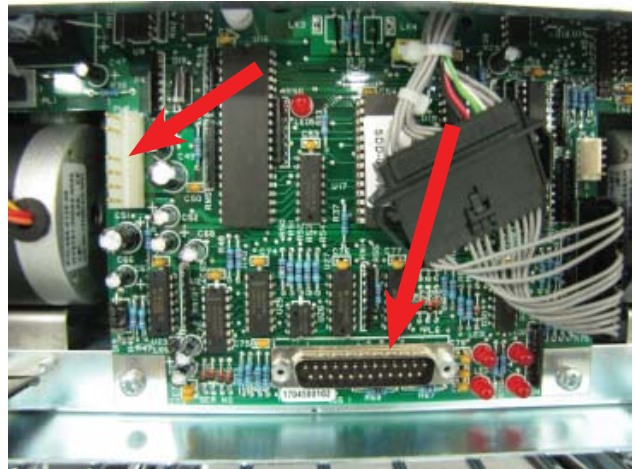


- 13.** Install the second lower closeout bracket on the bolts in the lower cabinet. Using the 7/16" hollow shaft nut driver, install the 6 hex nuts on the bolts. While tightening, ensure the bolts and bracket are sitting flat in the upper cabinet.

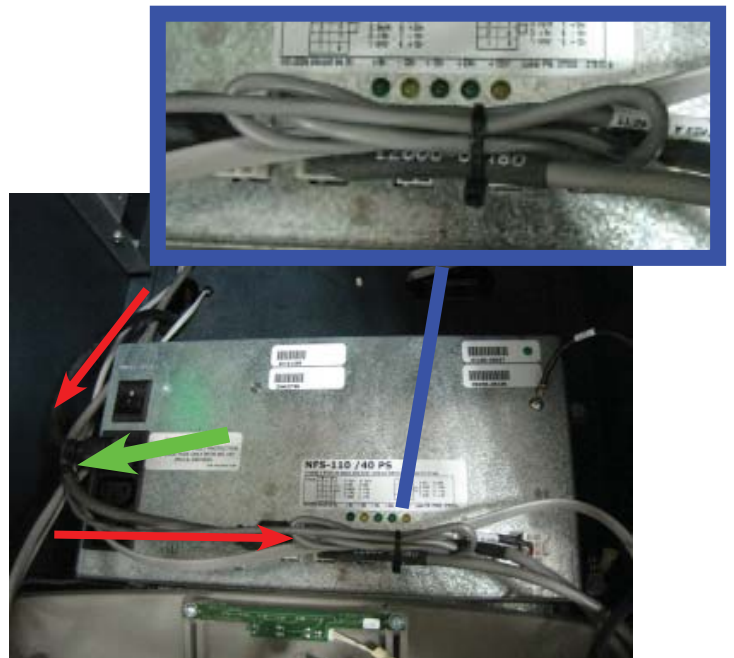
(picture shown with all clips and additional hardware removed from cabinet for clarity)



14. Plug the cables into the back of the SDD dispenser and tighten the thumbscrews on the communication cable to secure it. Reinstall the dispenser into the unit.



15. Ensure all excess security module power cable and communication cable is pulled into the upper cabinet. Loop the security module power cable back on itself to condense the length of the cable (blue box). TY Wrap the cable and cut off the excess. TY Wrap the cables on the side of the power supply and cut off excess (green arrow).

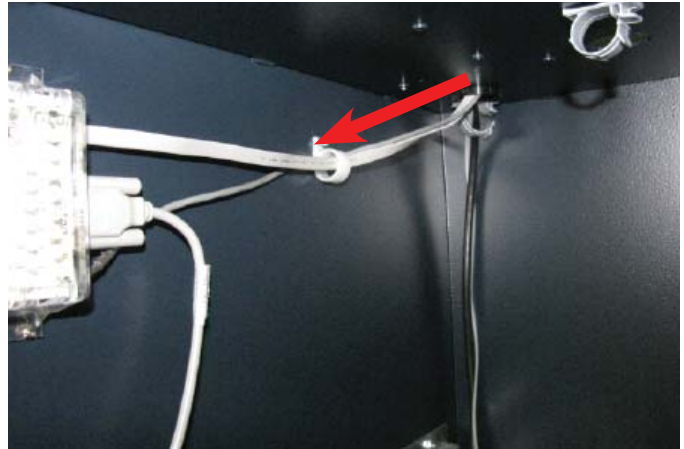


HOLE CLOSEOUT BRACKET KIT

RL 5000 with Cabinet # 03015-00793 / 03015-00833 / 03015-01340 / 03015-00852 / 03015-00900 with an SDD Dispenser

**If the unit has been upgraded with a security module, skip to step #8.

5. Feed the security module power cable and the communication cable through the front left opening into the lower cabinet. Route the cables through the quick release cable clip and plug them into the security module.



6. Obtain the dispenser power cable. Plug the power cable into the unit's power supply in the upper portion of the cabinet. Route the cable through the left hole opening into the lower cabinet.



7. Route the dispenser communication cable down the front of the dispenser tray, through the quick release cable clip and under the tray. Pull all excess cable up from behind the tray as shown.



8. Install 6 bolts into one closeout bracket. Set the closeout bracket in place into the right opening as shown. Ensure the bolts and bracket are sitting flat in the upper cabinet.



9. Install 4 bolts into one closeout bracket. Set the closeout bracket into the middle circle opening as shown. Ensure the bolts and bracket are sitting flat on the upper cabinet.

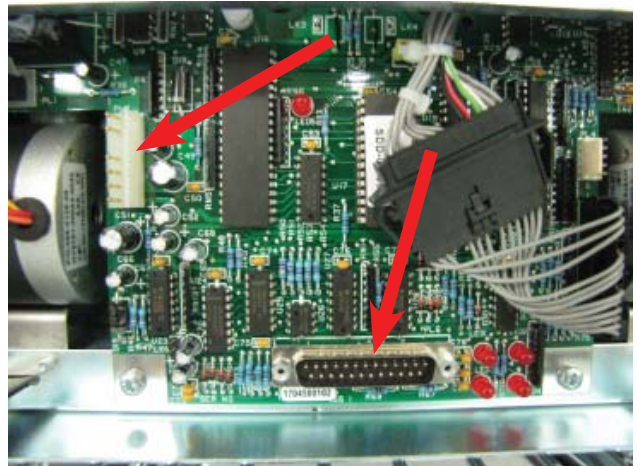


HOLE CLOSEOUT BRACKET KIT

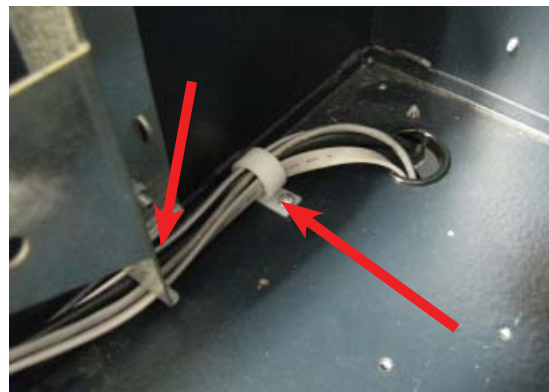
- 10.** Install the lower closeout bracket on the bolts in the lower cabinet. Using the 7/16" hollow shaft but driver, install the nuts on the bolts; 6 nuts on the nut and 4 bolts in the middle. While tightening, ensure the bolts and bracket are sitting flat in the upper cabinet.



- 11.** Plug the cables into the back of the SDD dispenser and tighten the thumbscrews on the communication cable to secure it. Reinstall the dispenser into the unit.

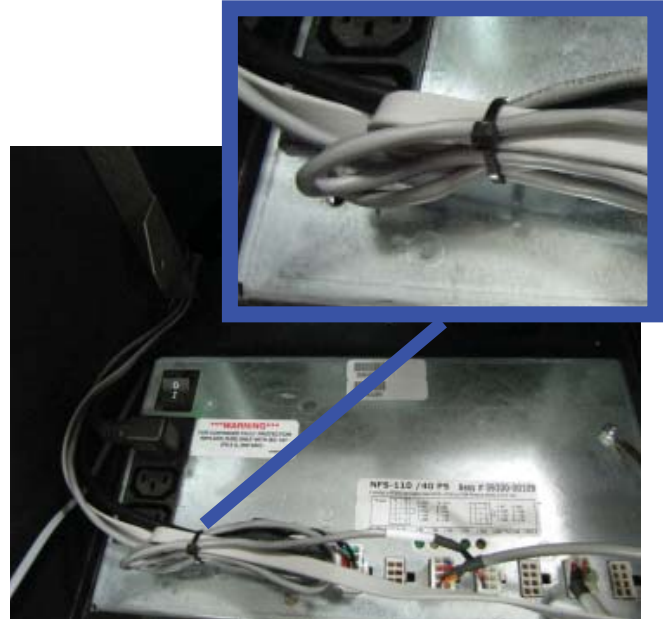


- 12.** Route all the cables in the upper cabinet through the cable clip previously installed. Route the cables under the bracket as shown.



- 13.** Route the security module communication and security module power cable around the unit's main power cable and over the power supply (red arrows). Plug the power cable into the power supply.

Ensure all excess security module power and communication cable is pulled into the upper cabinet. Loop the security module power cable back on itself to condense the length of the cable. TY Wrap the cable and cut off the excess.

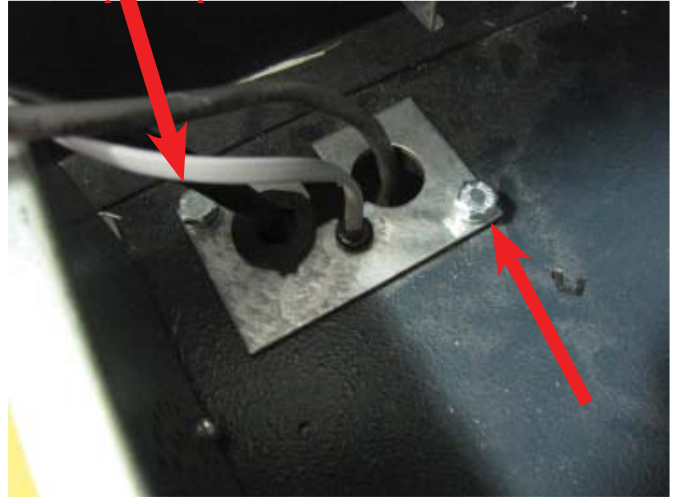


HOLE CLOSEOUT BRACKET KIT

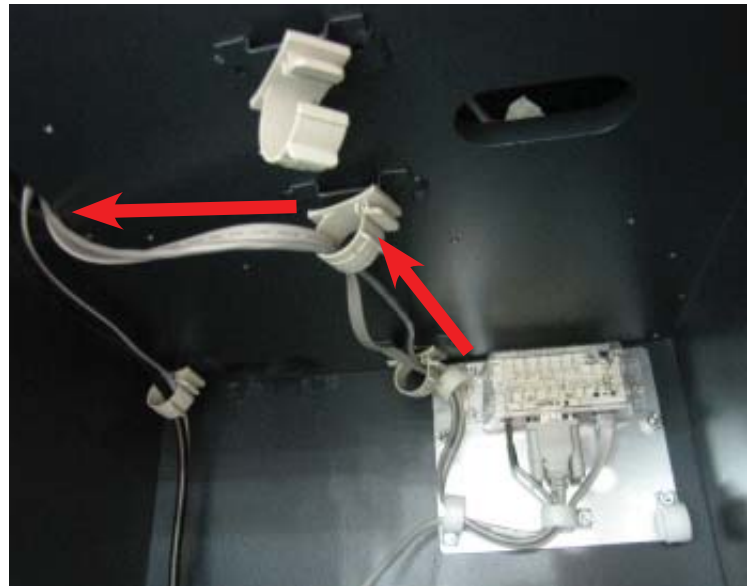
Vault # 03015-00064 / 03015-00200 / 03015-00227 with an SDD Dispenser

****If the unit has been upgraded with a security module, skip to step #9.**

5. From the upper portion of the cabinet, remove the two bolts & washers securing the anti-phishing bracket. Set aside for reinstallation.

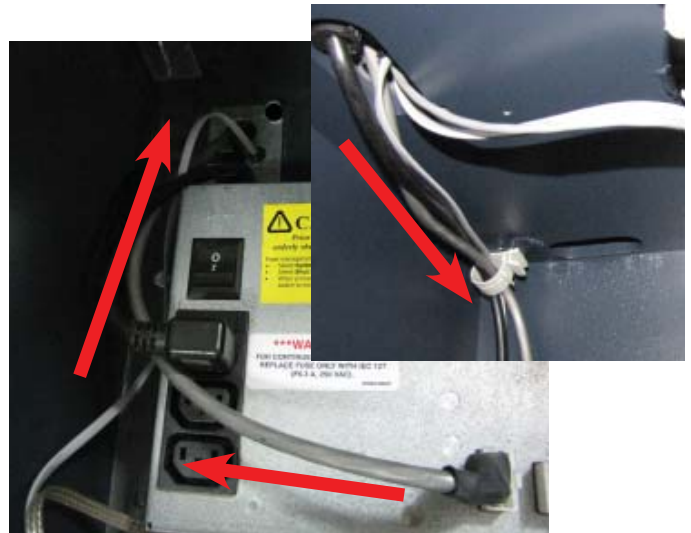


6. Route the security module power cable and security module communications cable through the upper middle back two clips. Route the cables into the upper portion of the cabinet through the left front hole opening and the anti-phishing bracket as shown.

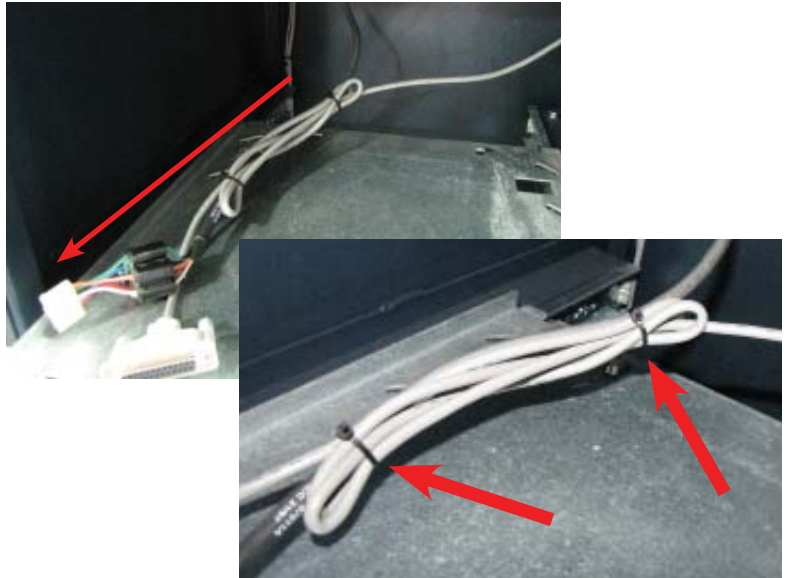


7. Obtain the dispenser power cable. Plug the power cable into the unit's power supply in the upper portion of the cabinet. Route the cable through the anti-fishing bracket and the left hole opening into the vault. Route the dispenser power cable through the rear left cable clip as shown.

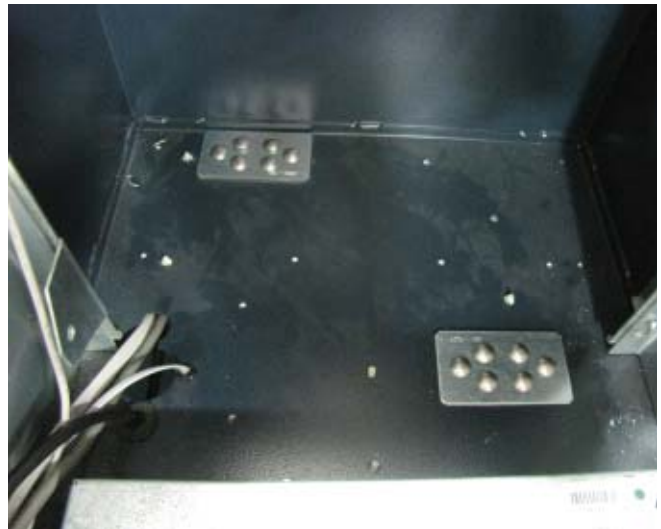
Reinstall the two washers and two bolts to secure the anti-phishing bracket.



8. Loop the SDD dispenser communication cable back on itself twice to condense the length of the cable to match the length of the dispenser power cable. TY Wrap the two cables together in two spots as shown. Cut off the excess TY Wraps.



9. Install 6 bolts into one closeout bracket. Set the closeout bracket in place in the right opening. Install 6 bolts in the second closeout bracket. Set the second closeout bracket in the read left opening. Ensure the bolts and brackets are sitting flat on the upper cabinet.



10. Ensure the bolts are not intertwined in the cables in the lower cabinet. Remove the cable clip from the rear left of the lower cabinet.



HOLE CLOSEOUT BRACKET KIT

11. Install the lower closeout bracket on the bolts in the lower cabinet. Using the 7/16" hollow shaft nut driver, install the 6 hex nuts on the bolts. While tightening, ensure the bolts and bracket are sitting flat in the upper cabinet.



12. Reinstall the cable clip over the closeout bracket as shown.

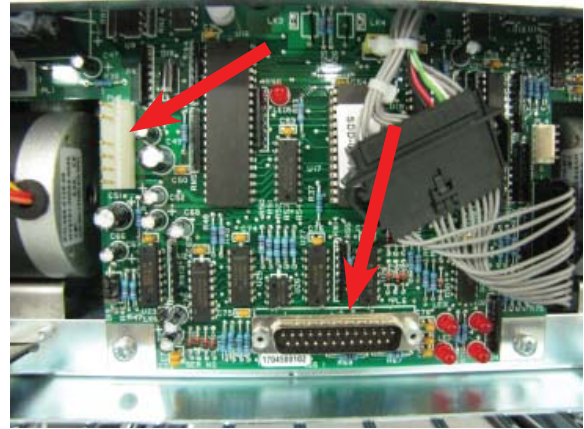


13. Install the second lower closeout bracket on the bolts in the lower cabinet. Using the 7/16" hollow shaft nut driver, install the 6 hex nuts on the bolts. While tightening, ensure the bolts and bracket are sitting flat in the upper cabinet.

(picture shown with all clips and additional hardware removed from cabinet for clarity)



14. Plug the cables into the back of the SDD dispenser and tighten the thumbscrews on the communication cable to secure it. Reinstall the dispenser into the unit.



15. Route the security module communication and security module power cable around the unit's main power cable and over the power supply (red arrows). Plug the power cable into the power supply.

Ensure all excess security module power and communication cable is pulled into the upper cabinet. Loop the security module power cable back on itself to condense the length of the cable. TY Wrap the cable and cut off the excess (blue box). TY Wrap the cables on the side of the power supply and cut off excess (green arrow).

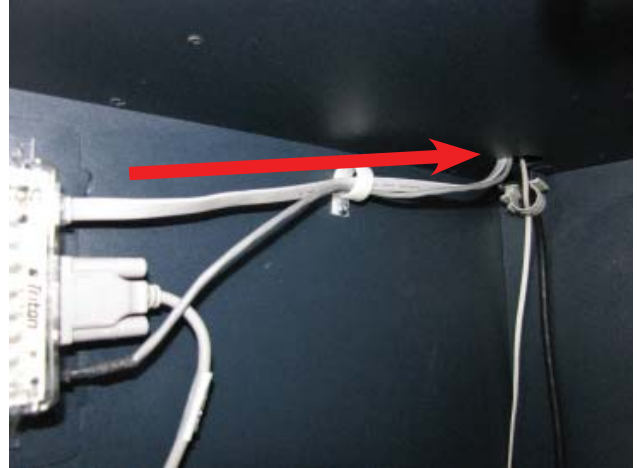


HOLE CLOSEOUT BRACKET KIT

Vault # 03015-00798 / 03015-00212 / 03015-00841 / 03015-00851 / 03015-01841 / 03015-00851 / 03015-01841 with an SDD Dispenser

****If the unit has been upgraded with a security module, skip to step #8.**

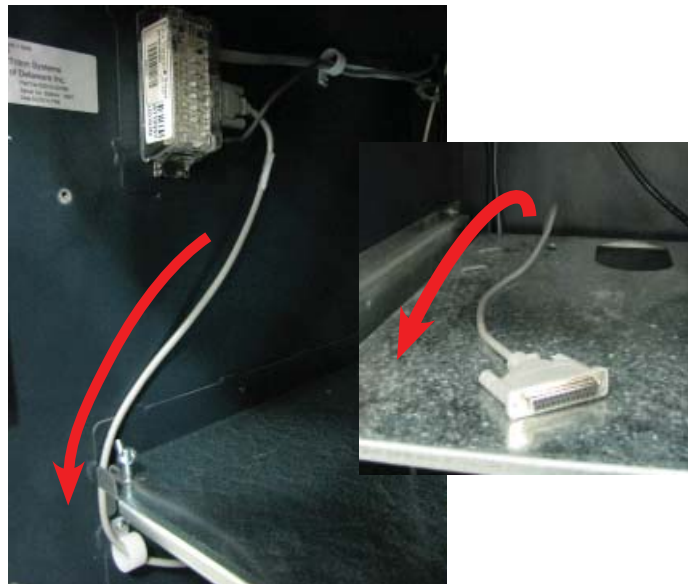
5. Route the security module power cable and the security module communication cable through the quick release cable clip and into the upper cabinet through the back left opening and the anti-phishing bracket as shown.



6. Obtain the dispenser power cable. Plug the power cable into the unit's power supply in the upper portion of the cabinet. Route the cable through the left hole opening into the lower cabinet.



7. Route the dispenser communication cable down in front of the dispenser tray, through the quick release cable clip, under the tray and up from behind the tray as shown.



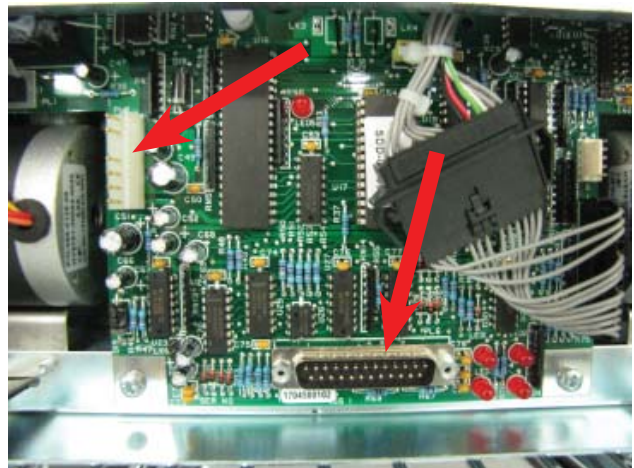
8. Install 6 bolts into one closeout bracket. Set the bracket in place into the right opening. Install 4 bolts, into the middle holes of the closeout bracket, and set it in place in the middle opening as shown. Ensure the bolts and brackets are sitting flat on the upper cabinet.



9. Install the lower closeout bracket on the 6 bolts on the right opening. Using the 7/16" hollow shaft but driver, install 6 hex nuts on the bolts. Install the second closeout bracket onto the 4 bolts on the middle opening. Install 4 hex nuts on the bolts. While tightening, ensure the bolts and brackets are sitting flat in the upper cabinet.



10. Plug the cables into the back of the SDD dispenser and tighten the thumbscrews on the communication cable to secure it. Reinstall the dispenser into the unit.

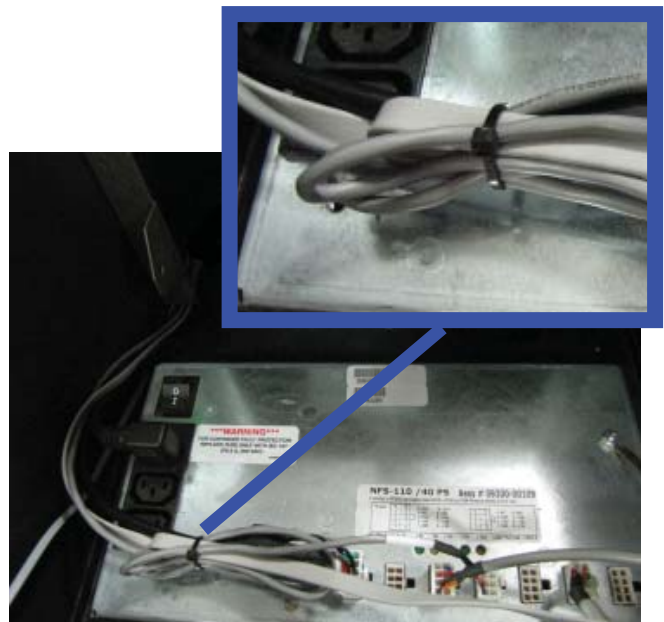


HOLE CLOSEOUT BRACKET KIT

11. Ensure all extra security module communication cable and security module power cable is pulled into the upper cabinet. TY Wrap all the cables together as shown and cut off excess TY Wrap. Route the cables under the bracket as shown.



12. Loop the security module power cable back on itself to condense the length of the cable. TY Wrap the cable and cut off the excess.



SECTION 2

HOLE CLOSEOUT BRACKET KIT

KIT 06200-08211

**RL5000 CABINET OR VAULT
NMD50**

HOLE CLOSEOUT BRACKET KIT

REQUIRED PARTS AND TOOLS

TOOLS REQUIRED	USB flash drive 7/16" hollow shaft nut driver <i>Possible additional tools required:</i> - #2 Phillips screwdriver - Side cut pliers
KIT 06200-08211	Hole Closeout Bracket Kit

Description	Qty
Closeout Bracket	2
1/4-20 Nylon Lock Hex Jam Nut	6
1/4-20 x 1.25 Steel Carriage Bolt	6
Cable Clip 3/4" Round, Screw-In Quick Release ROHS	3
Nut #8-32 Hex Nut Ext. Tooth Washer ROHS	3
Screw #8-32 3/8 Inch Pan Phil Head w/Ext Tooth Wash ROHS	3
6 Inches TY Wraps ROHS	3

For added security measures, Triton recommends the installation of the Security Module Upgrade Kit prior to the installation of the Hole Closeout Bracket Kit.

If the unit has not been upgraded, additional parts may be needed dependent on the cabinet part number / serial number.

RL5000 UPGRADE

**If the unit has been upgraded with the “Electronic Journal to Security Module Upgrade Kit”, skip to the table of contents on page 5 to locate the page number of the work instructions for the correct unit.

BEFORE PROCEEDING:

- Ensure all of your Journal Records have been saved to a USB device.
 - Perform a proper management function shut down to remove power from the ATM.
 - Unlock and open the ATM control panel. Turn the power switch to the OFF (0) position. If possible, unplug the ATM power cord at the wall outlet.
 - Open the dispenser area.
-
1. Disconnect the dispenser communications and power cables from the dispenser. Unplug the dispenser power cable from the power supply and remove from the unit. Set aside for reinstallation.
 2. Refer to the applicable service manual for your unit for steps to remove your dispenser. Removal of the dispenser will provide the working room necessary to accomplish the cable routing.
 3. Disconnect the security module communication cable and the power cable from the security module and feed the cable into the upper cabinet.
 4. Connect the dispenser communication cable to the security module. Tighten the thumbscrews to secure the cable.

HOLE CLOSEOUT BRACKET KIT

Use the table of contents below to locate your unit's serial number and page number of the correct installation and cable routing.

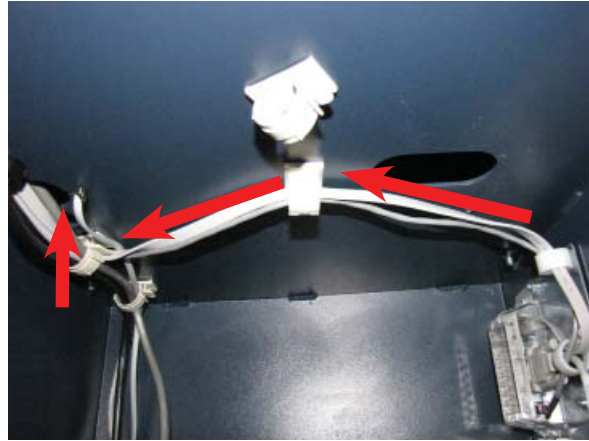
<i>Business Hour Cabinet</i> Part Number	Serial Number	Number of Kits	Page
Xscale			
09700-00000	LRL511503251xxxx-LRL511504295xxxx	1	5
09015-00052/03015-00167	LRL511504296xxxx-LRL511507339xxxx	2	10
X2			
03015-00052/03015-00167	LRL531507340xxxx-LRL531509314xxxx	2	10
03015-00793/03015-00833/03015-01340 03015-00852	LRL531509315xxxx-LRL531514364xxxx Also need to purchase: 09120-07199 - NMD50 Power Cable 09120-00900 - SM power cable	2	16

<i>Level One Vault</i> Part Number	Serial Number	Number of Kit	Page
Xscale			
03015-00064/03015-00200/03015-00227	LRL512503297xxxx-LRL512507378xxxx	2	22
X2			
3015-00064/03015-00200/03015-00227	LRL532507352xxxx RL532509214xxxx	2	22
03015-00798/03015-00212/03015-00841 03015-00851/03015-01841	LRL532509215xxxx-LRL532514364xxxx	2	28

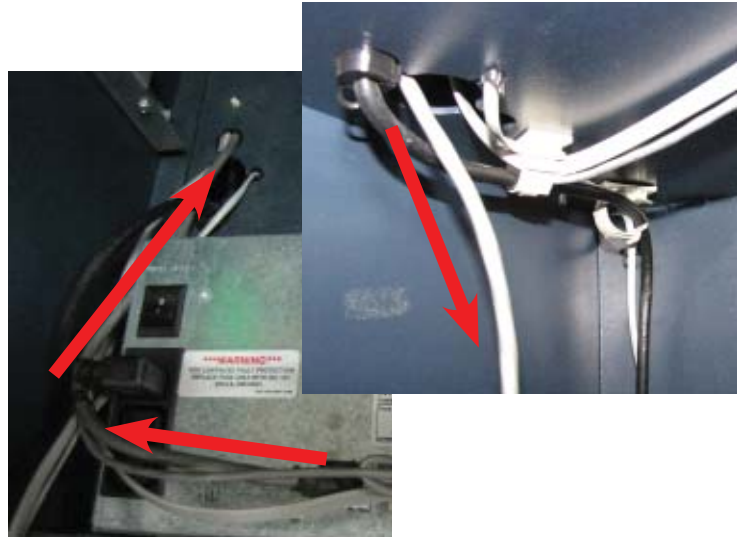
Cabinet # 09700-00000 with an NMD 50 Dispenser

****If the unit has been upgraded, skip to step #7.**

5. Route the security module power cable and the security module communication cable through the upper back middle cable clip and the upper left front cable clip as shown. Route the excess power and communication cable into the upper cabinet through the left hole opening.



6. Obtain the dispenser power cable. Plug the power cable into the unit's power supply in the upper portion of the cabinet. Route the cable through the left hole opening into the lower cabinet.



7. Install the 6 bolts into one closeout bracket. Set the closeout bracket in place into the right opening as shown. Ensure the bolts and bracket are sitting flat on the upper cabinet.



HOLE CLOSEOUT BRACKET KIT

8. Ensure the bolts are not intertwined in the cables in the lower cabinet.



9. Install the second closeout bracket on the bolts in the lower cabinet. Using the 7/16" hollow shaft nut driver, install the 6 hex nuts on the bolts. While tightening, ensure the bolts and bracket are sitting flat in the upper cabinet.



10. With the dispenser still removed from the unit, peel the paper backing off one Panduit Adhesive Cable Clip and adhere it to the back right side of the NMD50 dispenser. Peel the paper backing off another Panduit Adhesive Cable Clip and adhere it to the front right side of the NMD50 dispenser. Note the orientation of the clips in the pictures.



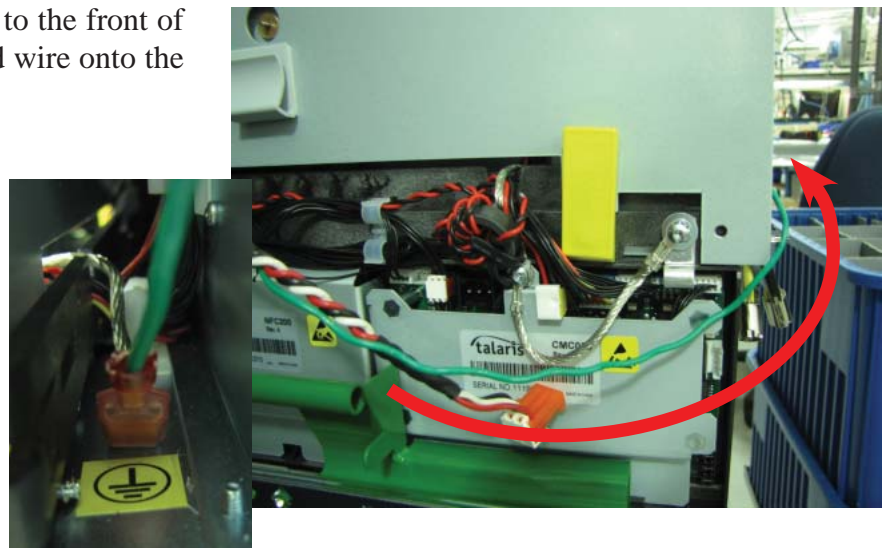
11. Peel the paper backing off one Panduit Adhesive Cable Clip and adhere it to the front left side of the NMD50 dispenser. Note the orientation of the clip in the picture.



12. Remove the cassettes from the NMD50 if installed. Pull both slides out fully and ensure they lock into place. Set the dispenser into position ensuring the posts on the rails sit securely in the handle's notches. Reinstall the cassettes.



13. Route the ground wire around to the front of the dispenser. Plug the ground wire onto the quick connect as shown.

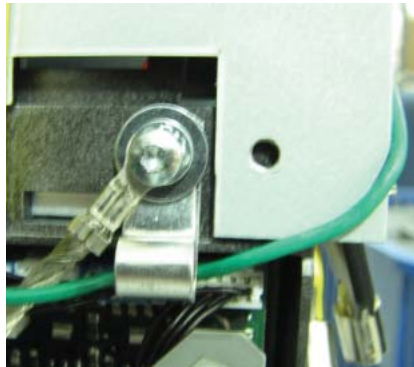


HOLE CLOSEOUT BRACKET KIT

14. Plug the Dispenser Power Cable into the side of the NMD50 as shown.



15. Tuck the ground wire under the clip on the side of the dispenser. Route the power cable through the two cable clips along the left side of the dispenser. Route the cable around to the rear of the dispenser and through the cable clip on the back left side of the NMD50.



16. Route the Dispenser data cable from the security module assembly through the two cable clips on the right side of the NMD50 dispenser as shown.

(Dispenser removed from the unit for clarification)



- 17.** Route the Dispenser data cable across the top of the dispenser, through the cable clip on the left side of the dispenser and plug it into the dispenser as shown.

(Dispenser removed from the unit for clarification)

Unlock the slides and push the dispenser into the cabinet.



- 18.** Route the security module communication and security module power cable around the unit's main power cable and over the power supply (red arrows). Plug the power cable into the power supply.

Ensure all excess security module power and communication cable is pulled into the upper cabinet. Loop the security module power cable back on itself to condense the length of the cable. TY Wrap the cable and cut off the excess. TY Wrap the cables on the side of the power supply and cut off excess (green arrows).

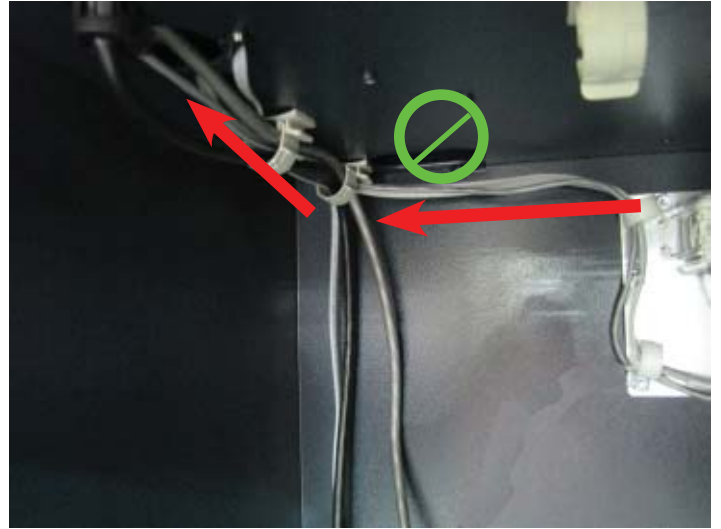


HOLE CLOSEOUT BRACKET KIT

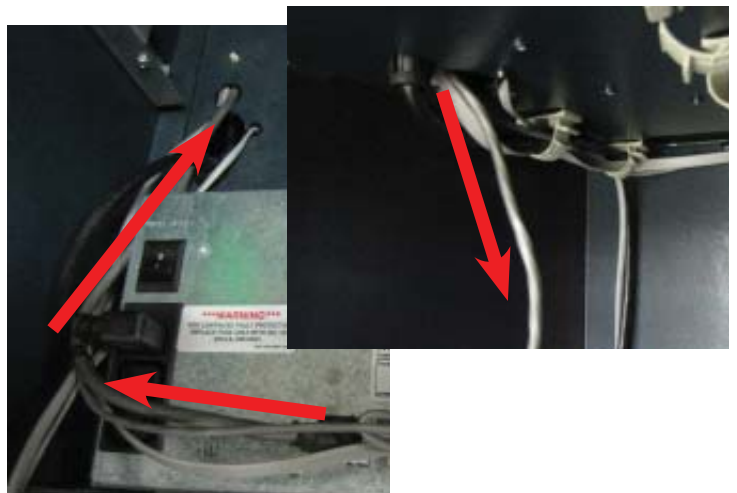
Cabinet # 03015-00052 & 03015-00167 with an NMD 50 Dispenser

**If the unit has been upgraded, skip to step #7.

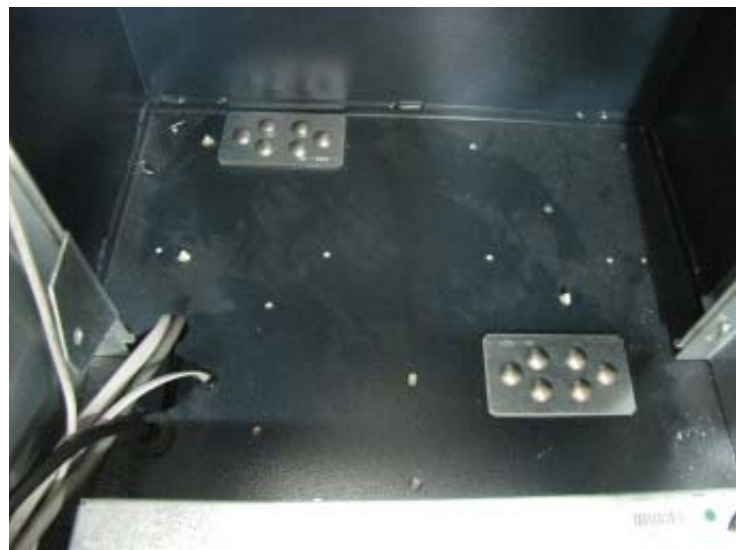
5. Route the security module power cable and security module communications cable past the back opening (green circle) and through the upper left cable clips. Route the cables into the upper portion of the cabinet through the left hole opening.



6. Obtain the dispenser power cable. Plug the power cable into the unit's power supply in the upper portion of the cabinet. Route the cable through the left hole opening into the lower cabinet.



7. Install the 6 bolts into one closeout bracket. Set the closeout bracket in place into the right opening. Install 6 more bolts into another closeout bracket. Set the second closeout bracket into the back opening as shown. Ensure the bolts and brackets are sitting flat on the upper cabinet.



8. Ensure the bolts are not intertwined in the cables in the lower cabinet.



9. Remove the cable clip in the rear left corner of the lower cabinet for easier installation of the closeout bracket.



10. Install the lower close out bracket on the bolts. Using the 7/16" hollow shaft nut driver, install 6 hex nuts on the bolts. While tightening, ensure the bolts and bracket are sitting flat in the upper cabinet.



HOLE CLOSEOUT BRACKET KIT

11. Reinstall the cable clip over the closeout bracket as shown.

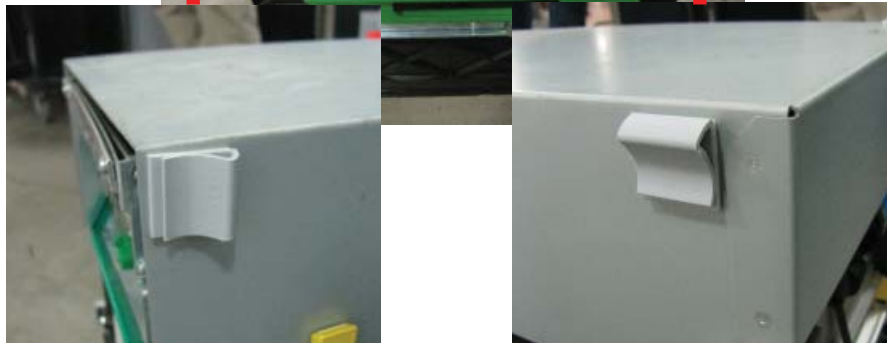


12. Install the second lower closeout bracket on the bolts in the lower cabinet. Using the 7/16" hollow shaft nut driver, install the 6 hex nuts on the bolts. While tightening, ensure the bolts and bracket are sitting flat in the upper cabinet.

(picture shown with all clips and additional hardware removed from cabinet for clarity)



13. With the dispenser still removed from the unit, peel the paper backing off one Panduit Adhesive Cable Clip and adhere it to the back right side of the NMD50 dispenser. Peel the paper backing off another Panduit Adhesive Cable Clip and adhere it to the front right side of the NMD50 dispenser. Note the orientation of the clips in the pictures.



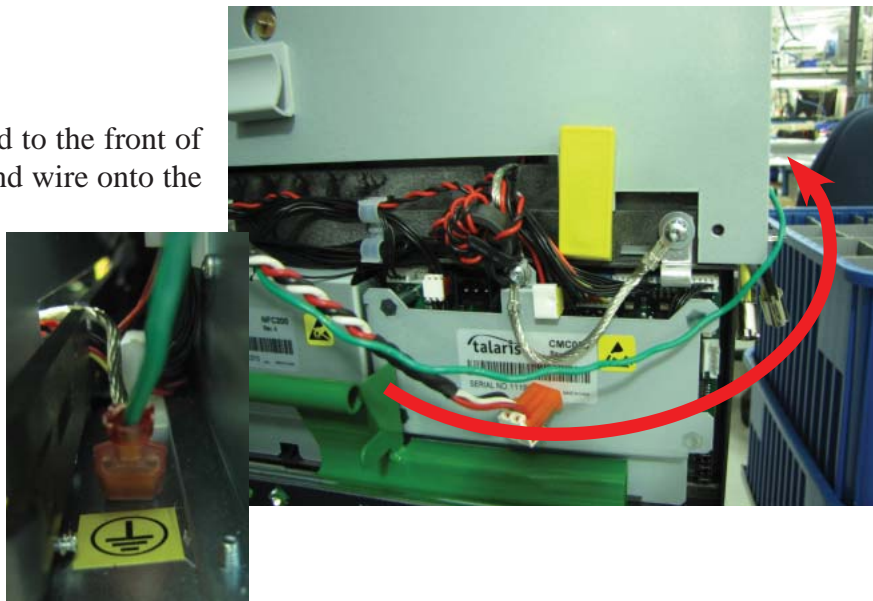
- 14.** Peel the paper backing off one Panduit Adhesive Cable Clip and adhere it to the front left side of the NMD50 dispenser. Note the orientation of the clips in the pictures.



- 15.** Remove the cassettes from the NMD50 if installed. Pull both slides out fully and ensure they lock into place. Set the dispenser into position ensuring the posts on the rails sit securely in the handle's notches. Reinstall the cassettes.



- 16.** Route the ground wire around to the front of the dispenser. Plug the ground wire onto the quick connect as shown.

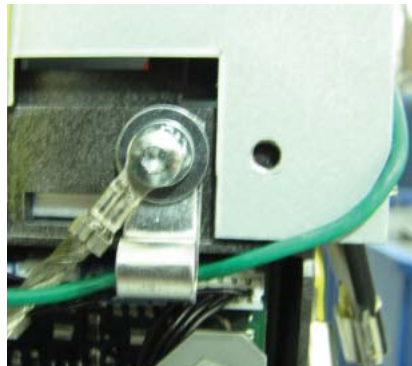


HOLE CLOSEOUT BRACKET KIT

17. Plug the Dispenser Power Cable into the side of the NMD50 as shown.



18. Tuck the ground wire under the clip on the side of the dispenser. Route the power cable through the two cable clips along the left side of the dispenser. Route the cable around to the rear of the dispenser and through the cable clip on the back left side of the NMD50.



19. Route the Dispenser data cable from the security module assembly through the two cable clips on the right side of the NMD50 dispenser as shown.

(Dispenser removed from the unit for clarification)



20. Route the Dispenser Communication Cable across the top of the dispenser, through the cable clip on the left side of the dispenser and plug it into the dispenser as shown.

(Dispenser removed from the unit for clarification)

Unlock the slides and push the dispenser into the cabinet.



21. Route the security module communication and security module power cable around the unit's main power cable and over the power supply (red arrows). Plug the power cable into the power supply.

Ensure all excess security module power and communication cable is pulled into the upper cabinet. Loop the security module power cable back on itself to condense the length of the cable. TY Wrap the cable and cut off the excess. TY Wrap the cables on the side of the power supply and cut off excess (green arrows).

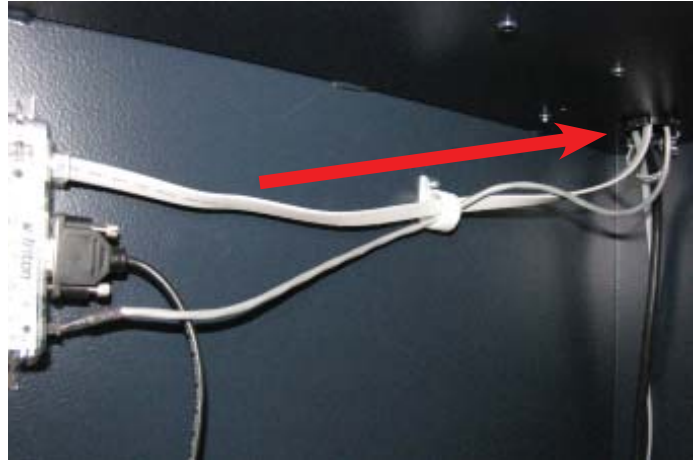


HOLE CLOSEOUT BRACKET KIT

Cabinet # 03015-00793 / 03015-00833 / 03015-01340 / 03015-00852 / 03015-00900 with an NMD 50 Dispenser

****If the unit has been upgraded, skip to step #7.**

5. Route the security module power cable and the security module communication cable through the quick release cable clip and into the upper cabinet through the back left opening as shown.



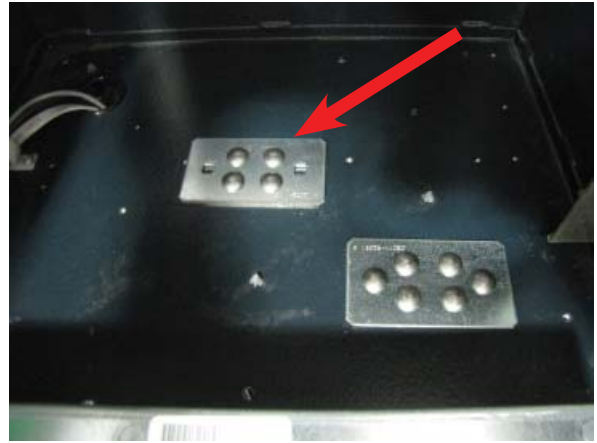
6. Obtain the dispenser power cable. Plug the power cable into the unit's power supply in the upper portion of the cabinet. Route the cable through the left hole opening into the lower cabinet.



7. Install 6 bolts into one closeout bracket. Set the closeout bracket in place into the right opening as shown. Ensure the bolts and bracket are sitting flat in the upper cabinet.



8. Install 4 bolts into one closeout bracket. Set the closeout bracket into the middle circle opening as shown. Ensure the bolts and bracket are sitting flat on the upper cabinet.



9. Install the lower closeout bracket on the bolts in the lower cabinet. Using the 7/16" hollow shaft but driver, install the nuts on the bolts; 6 nuts on the nut and 4 bolts in the middle. While tightening, ensure the bolts and bracket are sitting flat in the upper cabinet.



HOLE CLOSEOUT BRACKET KIT

10. With the dispenser still removed from the unit, peel the paper backing off one Panduit Adhesive Cable Clip and adhere it to the back right side of the NMD50 dispenser. Peel the paper backing off another Panduit Adhesive Cable Clip and adhere it to the front right side of the NMD50 dispenser. Note the orientation of the clips in the pictures.



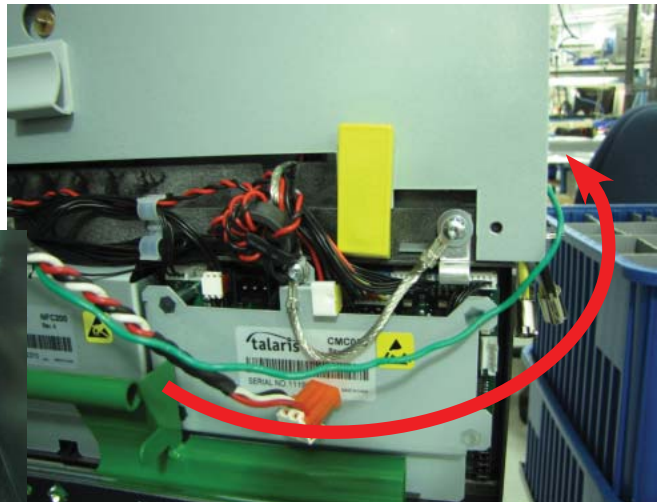
11. Peel the paper backing off one Panduit Adhesive Cable Clip and adhere it to the front left side of the NMD50 dispenser. Note the orientation of the clips in the pictures.



12. Remove the cassettes from the NMD50 if installed. Pull both slides out fully and ensure they lock into place. Set the dispenser into position ensuring the posts on the rails sit securely in the handle's notches. Reinstall the cassettes.



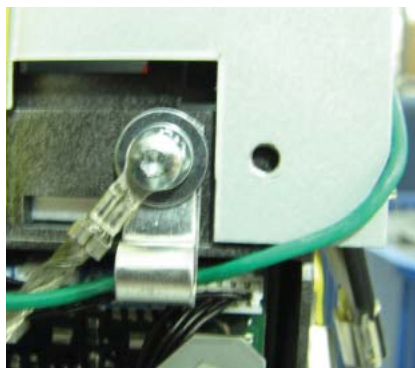
13. Route the ground wire around to the front of the dispenser. Plug the ground wire onto the quick connect as shown.



14. Plug the Dispenser Power Cable into the side of the NMD50 as shown.



15. Tuck the ground wire under the clip on the side of the dispenser. Route the power cable through the two cable clips along the left side of the dispenser. Route the cable around to the rear of the dispenser and through the cable clip on the back left side of the NMD50.



HOLE CLOSEOUT BRACKET KIT

16. Route the Dispenser data cable from the security module assembly through the two cable clips on the right side of the NMD50 dispenser as shown.

(Dispenser removed from the unit for clarification)



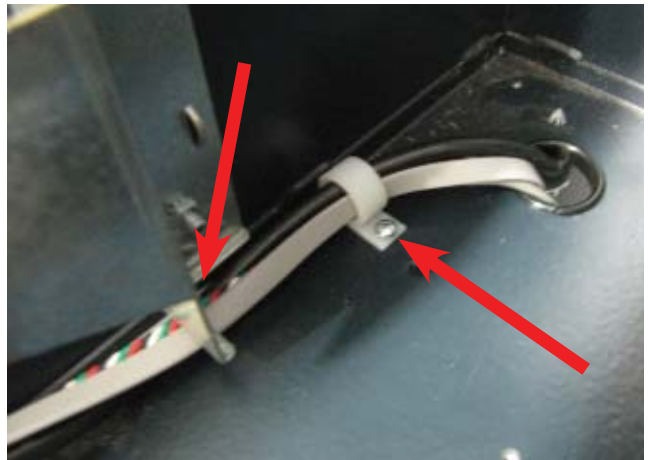
17. Route the Dispenser Communication Cable across the top of the dispenser, through the cable clip on the left side of the dispenser and plug it into the dispenser as shown.

(Dispenser removed from the unit for clarification)

Unlock the slides and push the dispenser into the cabinet.

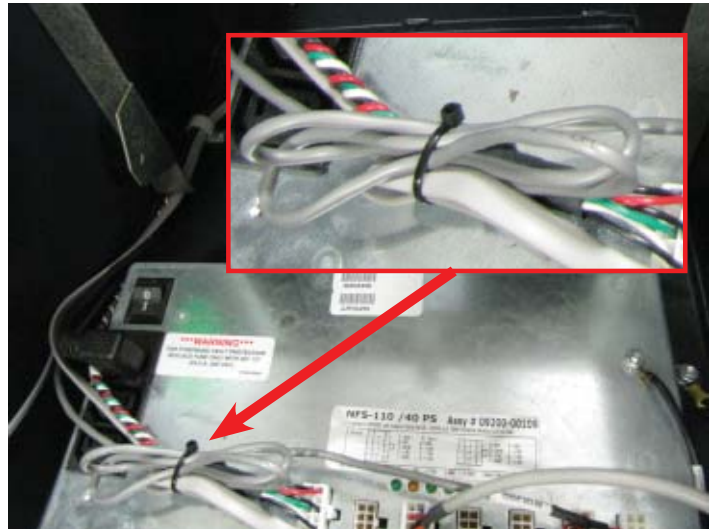


18. In the upper cabinet, route all the cables through the cable clip previously installed. Route the cables under the bracket as shown.



19. Route the security module communication and security module power cable around the unit's main power cable and over the power supply (red arrows). Plug the power cable into the power supply.

Ensure all excess security module power and communication cable is pulled into the upper cabinet. Loop the security module power cable back on itself to condense the length of the cable. TY Wrap the cable and cut off the excess. TY Wrap the cables on the side of the power supply and cut off excess (green arrows).



HOLE CLOSEOUT BRACKET KIT

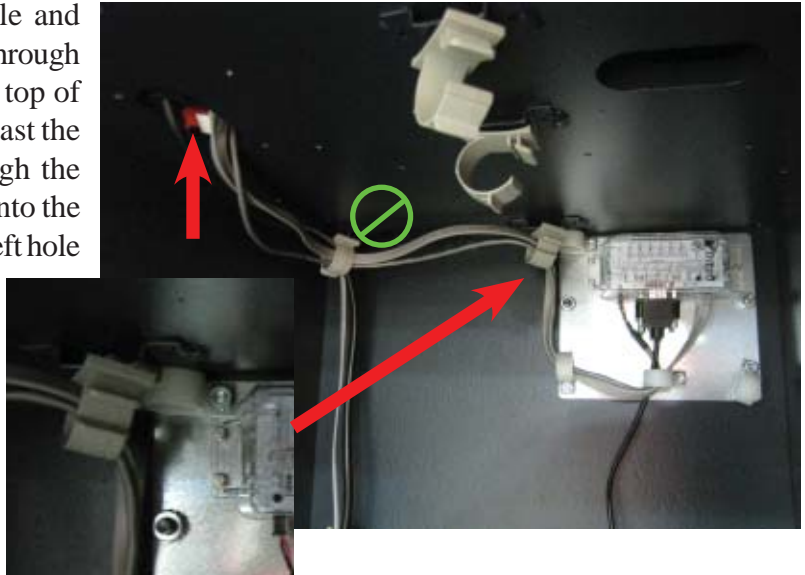
Vault # 03015-00064 / 03015-00200 / 03015-00227 with an NMD 50 Dispenser

****If the unit has been upgraded, skip to step #8.**

5. From the upper portion of the cabinet, remove the two bolts & two washers that secure the anti-phishing bracket. Set aside for reinstallation.



6. Route the security module power cable and security module communications cable through the rear upper middle cable clip on the top of the vault. Continue routing the cables past the back opening (green circle) and through the upper left cable clip. Route the cables into the upper portion of the cabinet through the left hole opening and the anti-phishing bracket.



7. Obtain the dispenser power cable. Plug the power cable into the unit's power supply in the upper portion of the cabinet. Route the cable through the anti-phishing bracket and the left hole opening into the lower cabinet.

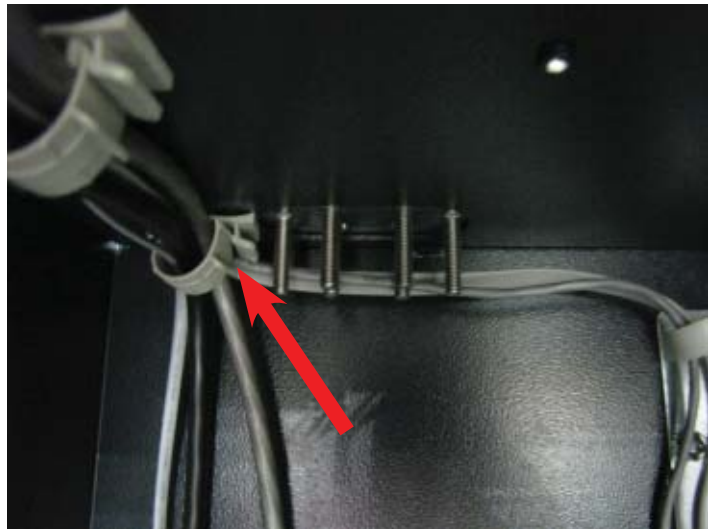
Reinstall the two washers and two bolts to secure the anti-phishing bracket.



- 8.** Install 6 bolts into one closeout bracket. Set the closeout bracket in place in the right opening. Install 6 bolts in the second closeout bracket. Set the second closeout bracket in the read left opening. Ensure the bolts and brackets are sitting flat on the upper cabinet.



- 9.** Ensure the bolts are not intertwined in the cables in the lower cabinet. Remove the cable clip from the rear left of the lower cabinet.

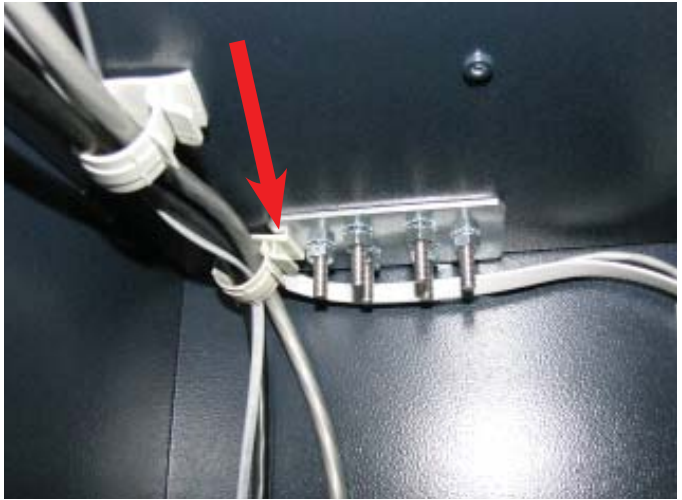


- 10.** Install the lower closeout bracket on the bolts in the lower cabinet. Using the 7/16" hollow shaft nut driver, install the 6 hex nuts on the bolts. While tightening, ensure the bolts and bracket are sitting flat in the upper cabinet.



HOLE CLOSEOUT BRACKET KIT

11. Reinstall the cable clip over the closeout bracket as shown.



12. Install the second lower closeout bracket on the bolts in the lower cabinet. Using the 7/16" hollow shaft nut driver, install the 6 hex nuts on the bolts. While tightening, ensure the bolts and bracket are sitting flat in the upper cabinet.

(picture shown with all clips and additional hardware removed from cabinet for clarity)



13. With the dispenser still removed from the unit, peel the paper backing off one Panduit Adhesive Cable Clip and adhere it to the back right side of the NMD50 dispenser. Peel the paper backing off another Panduit Adhesive Cable Clip and adhere it to the front right side of the NMD50 dispenser. Note the orientation of the clips in the pictures.



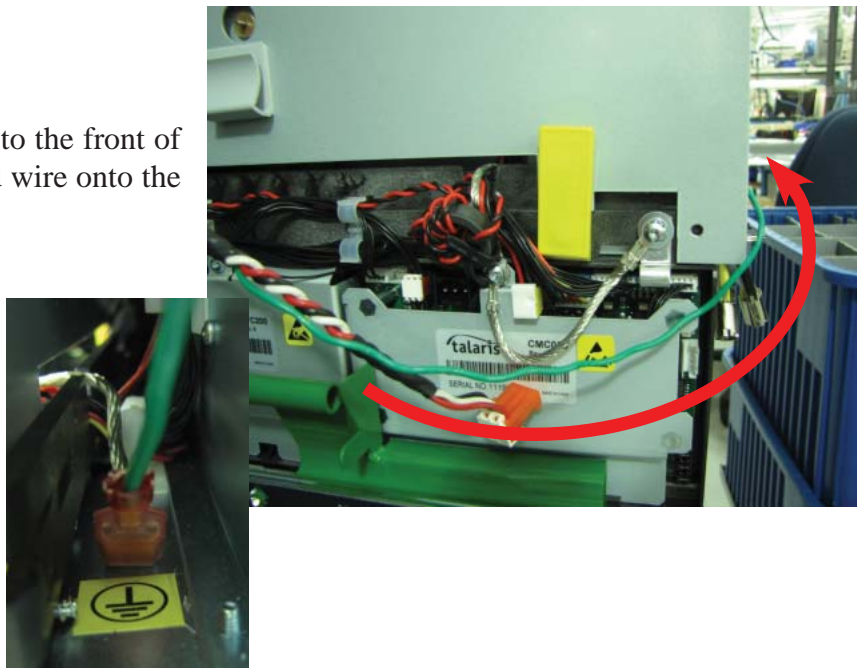
- 14.** Peel the paper backing off one Panduit Adhesive Cable Clip and adhere it to the front left side of the NMD50 dispenser. Note the orientation of the clips in the pictures.



- 15.** Remove the cassettes from the NMD50 if installed. Pull both slides out fully and ensure they lock into place. Set the dispenser into position ensuring the posts on the rails sit securely in the handle's notches. Reinstall the cassettes.



- 16.** Route the ground wire around to the front of the dispenser. Plug the ground wire onto the quick connect as shown.

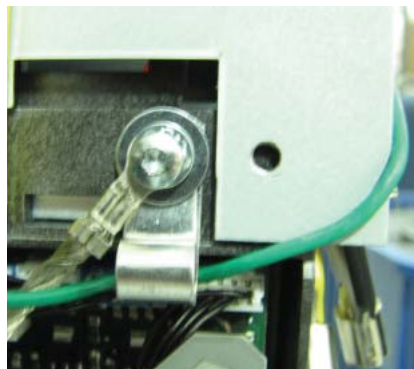


HOLE CLOSEOUT BRACKET KIT

17. Plug the Dispenser Power Cable into the side of the NMD50 as shown.



18. Tuck the ground wire under the clip on the side of the dispenser. Route the power cable through the two cable clips along the left side of the dispenser. Route the cable around to the rear of the dispenser and through the cable clip on the back left side of the NMD50.



19. Route the Dispenser data cable from the security module assembly through the two cable clips on the right side of the NMD50 dispenser as shown.

(Dispenser removed from the unit for clarification)



- 20.** Route the Dispenser Communication Cable across the top of the dispenser, through the cable clip on the left side of the dispenser and plug it into the dispenser as shown.

(Dispenser removed from the unit for clarification)

Unlock the slides and push the dispenser into the cabinet.



- 21.** Route the security module communication and security module power cable around the unit's main power cable and over the power supply (red arrows). Plug the power cable into the power supply.

Ensure all excess security module power and communication cable is pulled into the upper cabinet. Loop the security module power cable back on itself to condense the length of the cable. TY Wrap the cable and cut off the excess. TY Wrap the cables on the side of the power supply and cut off excess (green arrows).

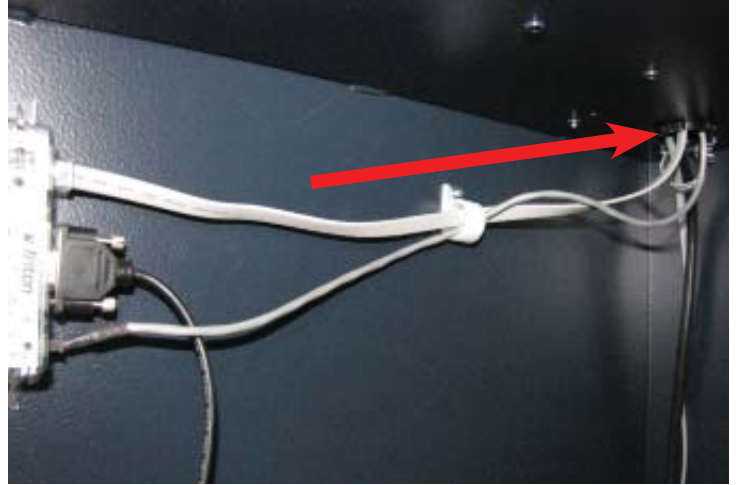


HOLE CLOSEOUT BRACKET KIT

Vault # 03015-00798 / 03015-00212 / 03015-00841 / 03015-00851 / 03015-01841 with an NMD 50 Dispenser

****If the unit has been upgraded, skip to step #7.**

5. Route the security module power cable and the security module communication cable through the quick release cable clip and into the upper cabinet through the back left opening as shown.



6. Obtain the dispenser power cable. Plug the power cable into the unit's power supply in the upper portion of the cabinet. Route the cable through the left hole opening into the lower cabinet.



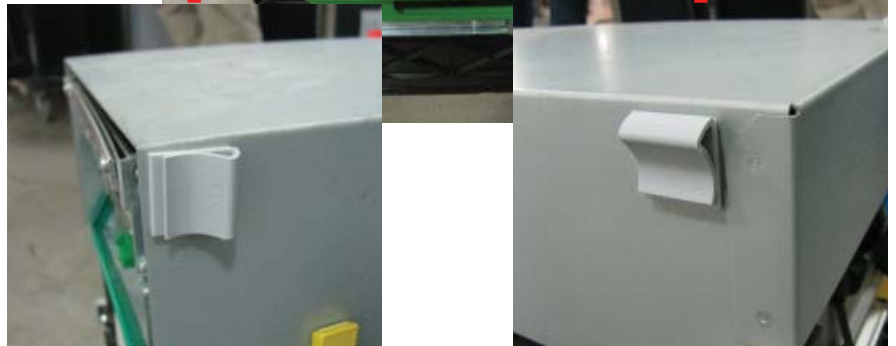
7. Install 6 bolts into one closeout bracket. Set the bracket in place into the right opening. Install 4 bolts, into the middle holes of the closeout bracket, and set it in place in the middle opening as shown. Ensure the bolts and brackets are sitting flat on the upper cabinet.



8. Install the lower closeout bracket on the 6 bolts on the right opening. Using the 7/16" hollow shaft but driver, install 6 hex nuts on the bolts. Install the second closeout bracket onto the 4 bolts on the middle opening. Install 4 hex nuts on the bolts. While tightening, ensure the bolts and brackets are sitting flat in the upper cabinet.



9. With the dispenser still removed from the unit, peel the paper backing off one Panduit Adhesive Cable Clip and adhere it to the back right side of the NMD50 dispenser. Peel the paper backing off another Panduit Adhesive Cable Clip and adhere it to the front right side of the NMD50 dispenser. Note the orientation of the clips in the pictures.



10. Peel the paper backing off one Panduit Adhesive Cable Clip and adhere it to the front left side of the NMD50 dispenser. Note the orientation of the clips in the pictures.

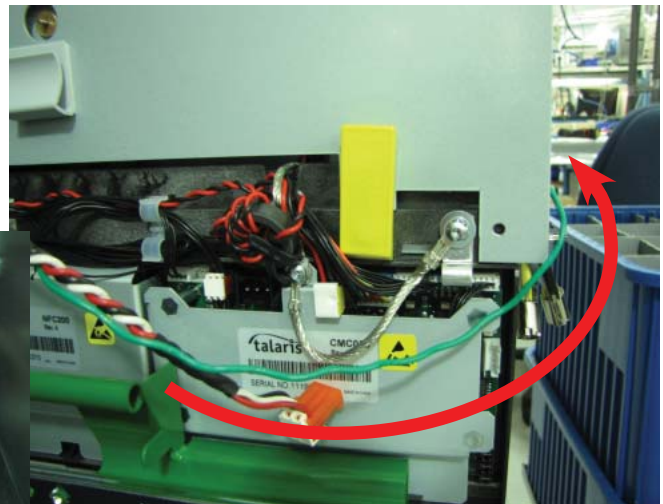


HOLE CLOSEOUT BRACKET KIT

11. Remove the cassettes from the NMD50 if installed. Pull both slides out fully and ensure they lock into place. Set the dispenser into position ensuring the posts on the rails sit securely in the handle's notches. Reinstall the cassettes.



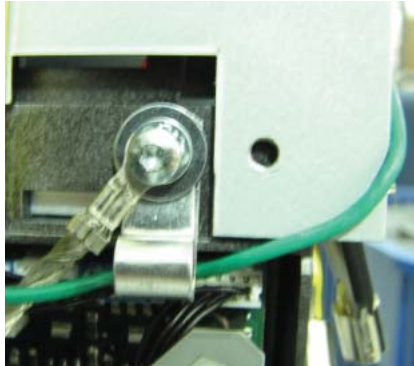
12. Route the ground wire around to the front of the dispenser. Plug the ground wire onto the quick connect as shown.



13. Plug the Dispenser Power Cable into the side of the NMD50 as shown.



14. Tuck the ground wire under the clip on the side of the dispenser. Route the power cable through the two cable clips along the left side of the dispenser. Route the cable around to the rear of the dispenser and through the cable clip on the back left side of the NMD50.



15. Route the Dispenser data cable from the security module assembly through the two cable clips on the right side of the NMD50 dispenser as shown.

(Dispenser removed from the unit for clarification)



16. Route the Dispenser Communication Cable across the top of the dispenser, through the cable clip on the left side of the dispenser and plug it into the dispenser as shown.

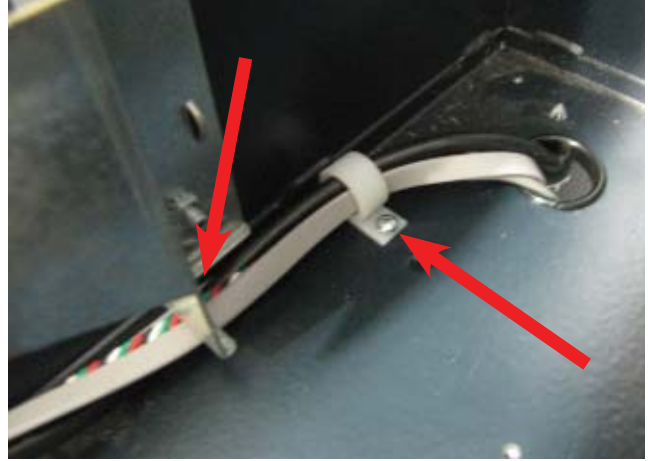
(Dispenser removed from the unit for clarification)

Unlock the slides and push the dispenser into the cabinet.



HOLE CLOSEOUT BRACKET KIT

17. In the upper cabinet, route all the cables through the cable clip previously installed. Route the cables under the bracket as shown.



18. Loop the security module power cable back on itself to condense the length of the cable. TY Wrap the cable and cut off the excess.

