



ZOOM MODEM

XSCALE INSTALLATION PROCEDURES

TDN 07103-00329

April 8, 2011

CORPORATE HEADQUARTERS:

21405 B St.

Long Beach, MS 39560

Phone: (800) 259-6672

Fax: (228) 868-9445

COPYRIGHT NOTICE

© 2011 Triton. All Rights Reserved. TRITON logo is a registered trademark of Triton Systems of Delaware LLC.

DOCUMENT UPDATES

April 8, 2011 Original

This procedure describes the steps necessary to replace the existing phone modem with the Triton Zoom PCMCIA modem in XScale (X1) ATMs. A software update file is required.

Software Requirement

The zip file name is: **XScale Modem Update.exe**

Software can be obtained from the Triton partner web site.

- Download the .exe to your PC
- Double click on the .exe, it will self extract
- Read the release notes
- Load the .tlf file into the ATM

PARTS IN KIT 06200-00329

01170-00047	Zoom PCMCIA phone modem with cable	1 ea
01500-00044	RJ45 Inline Coupler	1 ea

The enclosed Zoom CD, if there, is not required.

NOTE:

Go to the Triton Partner web site and download the file mentioned on page two (2). This file is not large and will allow the ATM to recognize the modem upon startup. After the file is loaded, proceed with the modem installation.

1. Power down the ATM (*Management Functions > System Parameters > Shut Down*) Open the upper cabinet.

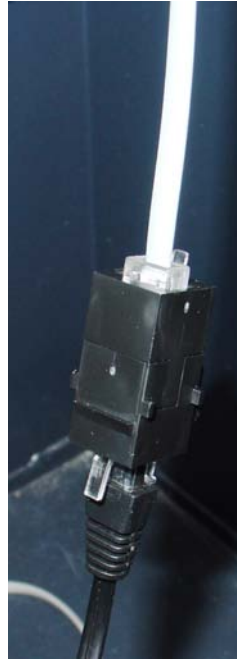
2. Disconnect the telephone input line from the existing telephone modem. Remove the PCMCIA Modem card or USB modem from the ATM.



3. Insert the Zoom modem into the PCMCIA slot on the main board.



4. Attach the Zoom cable to the Zoom Modem, the RJ45 coupler to the end of the Zoom Cable, and insert the existing telephone cable from the wall into the coupler. Note the cable clips are opposite.



5. Route the excess cable inside the cabinet so as not to be pinched or cut. Allow enough slack and movement to facilitate the opening of the upper fascia. Secure the excess cable as necessary.
6. Start the ATM and close the upper fascia. The POST should find the new modem. No other configurations should be required.