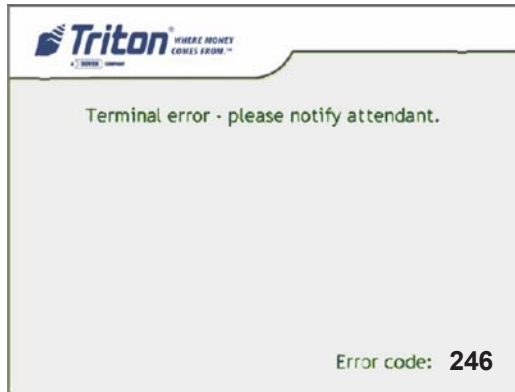
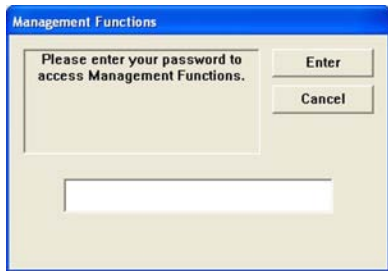


Changing Default Passwords

With the release of newer software, you may experience a new error code. Error Code (246) has been created for when the terminal's Master Password is in its default state. The terminal will detect this condition and go out of service. On the "Out of Service" screen, no error information will be displayed. The following is a screen capture of this state. This error code will not clear until the Master Password is changed from its default state.

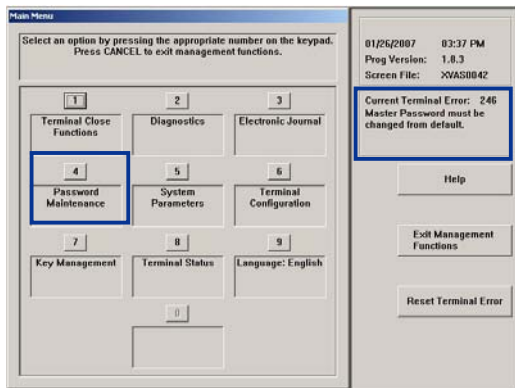


1. Enter Management Functions <CTRL> and <1>. Enter the default password '001234'.

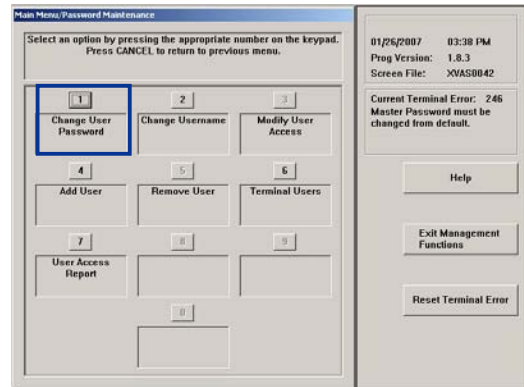


2. The Main Menu appears. Error code '246' appears at right and its description "Master password must be changed from default".

Select option <4>, PASSWORD MAINTENANCE.



3. Select option <1>, CHANGE USER PASSWORD.



4. Enter a new Master password.

NOTE: The terminal password consists of a 2-digit ID code and a Password of 4-12 digits. '00' is the Master ID code and cannot be changed. Only enter the password digits!



Example: If you enter '5566', then the Master password will be changed to '005566'. If you enter '005566', then the Master password will be changed to '00005566'.

NOTE: You will prompted to "Reconfirm" the new password.

5. Exit out of Management Functions. The terminal Master password has changed.