



TDM FIRMWARE UPDATE APPLICATION FIELD PROCEDURES

TDN 07103-00168B 05/2008

CORPORATE HEADQUARTERS

522 E. Railroad St.
Long Beach, MS 39560
Phone: (228) 868-1317
Fax: (228) 868-0437

COPYRIGHT NOTICE

© 2007-2008 Delaware Capital Formation, Inc. All Rights Reserved. Triton Systems of Delaware, Inc. is an operating company of Dover Electronics, Inc., a subsidiary of Dover Corporation (NYSE-DOV). DOVER, the DOVER logo and the Dover family of marks and TRITON, the TRITON logo and the Triton family of marks are registered trademarks of Delaware Capital Formation, Inc., a wholly owned subsidiary of Dover Corporation.

TDM FIRMWARE UPDATE PROCEDURES

INTRODUCTION

This guide covers the steps for updating firmware on units equipped with TDM dispensing mechanisms. These procedures require a PC or laptop to perform this update.

* BEFORE YOU START *

This update requires that *power will be applied or removed* to the TDM *when directed* in the procedures. If performing this procedure on a currently fielded ATM terminal, you must **FIRST POWER DOWN** the terminal.

FOR MODEL 81/9100 AND 97XX TERMINALS: Simply turn the power supply ON/OFF switch to the <OFF> (0) position. When directed in the procedures to apply power to the dispenser, turn the switch to <ON>. When directed to remove power to the dispenser, turn the switch to <OFF>.

FOR MODELS RL5000/RT2000/RL2000 TERMINALS: Enter **MANAGEMENT FUNCTIONS > SYSTEM PARAMETERS > SHUT DOWN THE TERMINAL**. When prompted “*It is now safe to turn off your computer*” on the screen, open the control panel/sleeve cabinet door and turn the power switch on the power supply to the <OFF> (0) position. When directed in the procedures to apply power to the dispenser, turn the power supply switch to <ON>. When directed to remove power to the dispenser, you must **again** enter Management Functions and perform the shut down procedures!

TDM Firmware Update Application	
Item Required: PC or Laptop	
Part Number/File Name	Description
* TDMFirmwareLoaderSetup.exe	Load utility for all units EXCEPT Model 9700
* TDMFirmwareLoader(9700)Setup.exe	Load utility for Model 9700 ONLY
09120-07014	Cable, TDM Download
* 07103-00168B	TDM Firmware Update Procedures
* Software / procedures located on applicable CD: RL/FT/RT Software Upgrade CD (P/N 05200-10033) 9XXX Software Upgrade CD (P/N 05200-00399)	

For customers loading the latest firmware in any model TDM, please note the following:

The Triton TDM download cable requires a PC/laptop to be equipped with a 9-pin serial COM port. Most new computers do not have serial COM ports, just USB ports. For those new computers, Triton offers an adapter kit (P/N 01260-00019) containing a USB-to-serial interface, Windows driver software, and a 1-meter USB cable. Contact Triton Sales department at 1-800-367-7191 if ordering this adapter cable kit.

*** WARNING ***

Ensure that the PC or laptop has been loaded with the TDM firmware loader setup program **first** and the load cable is connected to the PC. ***DO NOT connect the other end of the load cable to the TDM until prompted!*** Booting your PC or laptop with the TDM connected will cause the Windows operating system of your PC/laptop to interpret the TDM as a new PLUG AND PLAY piece of hardware, which it is **NOT**. Booting with the TDM connected ***will cause*** fatal corruption of the TDM memory and render the TDM inoperable!

TDM FIRMWARE UPDATE PROCEDURES

LOAD THE TDM FIRMWARE LOADER PROGRAM

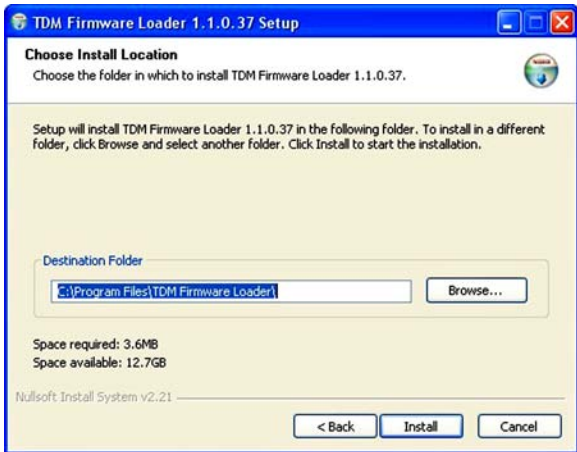
STEP 1

When you initially load the program, the main screen looks like this. Click <NEXT> to continue.



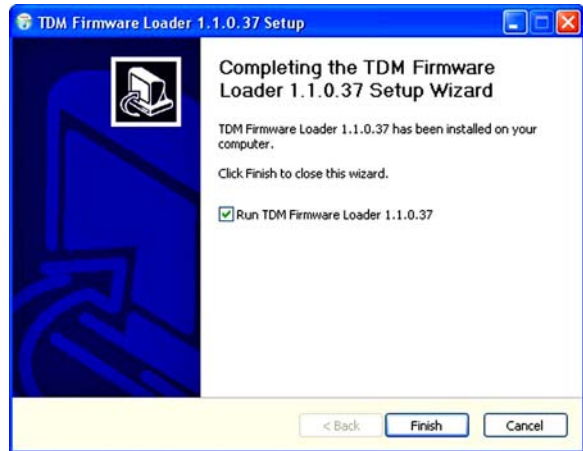
STEP 2

Select a folder to save the program. Select <INSTALL>.



STEP 3

The program will be saved to the selected folder. Select <FINISH> when completed.

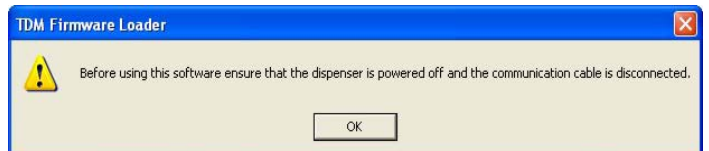


STEP 4

From your computer go to **START > ALL PROGRAMS > TDM FIRMWARE LOADER > TDM FIRMWARE LOADER** file. The following prompt appears:

“Before using this software, ensure that the dispenser is powered OFF and the data cable has been disconnected (from the dispenser)”.

Select <OK>.



TDM FIRMWARE UPDATE PROCEDURES

UPDATING TDM FIRMWARE

STEP 1

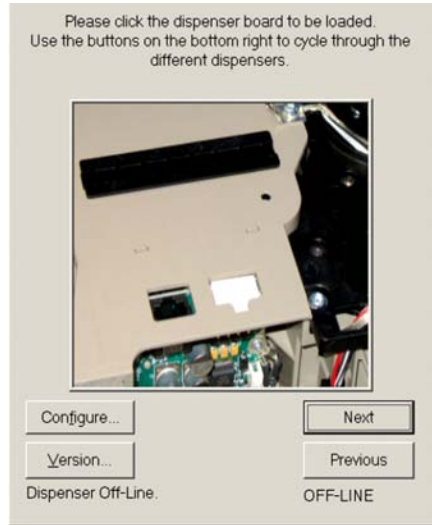
The following screens below will be displayed. Select <NEXT/PREVIOUS> to find your dispenser type. When found, place your cursor on the picture and <CLICK>. The selected dispenser type will be displayed asking to verify. Select <YES> if this is the dispenser type you will be updating.



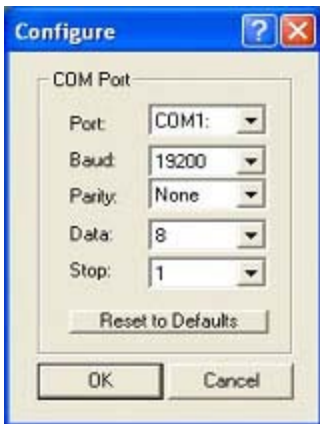
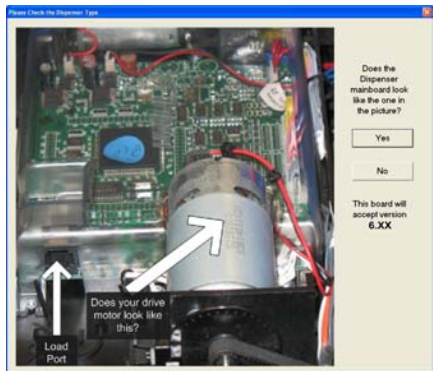
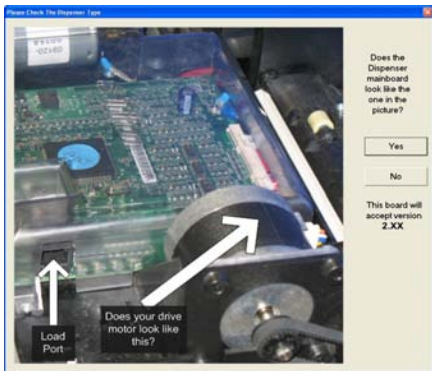
**LOADS DC STEPPER MOTOR TYPE
VERSION 2.XX / 1.XX**



**LOADS DC MOTOR TYPE
VERSION 6.XX / 5.XX**



**LOADS TDM-50
VERSION 10.XX**



CONFIGURE: Click on the “CONFIGURE” option to view/change the default settings. The COM Port settings allow communication from your computer's COM Port to the dispenser. These may need to be reconfigured depending on your computer's settings.

VERSION: Click “VERSION” option to view firmware update utility versions.

*** Important ***

If you select the wrong dispenser main board and the firmware load fails, the TDM firmware loader application will need to be closed and reopened to access the computer's communication port to attempt another load.



TDM FIRMWARE UPDATE PROCEDURES

STEP 2

When prompted, turn on the units power supply (which provides power to the dispenser). Select <OK> when completed.



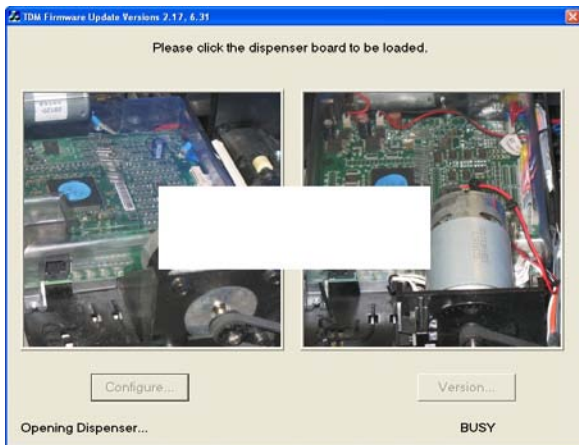
STEP 3

When prompted, connect the load cable (supplied) to your computer and to the load port on the dispenser. Select <OK> when completed.



STEP 4

The dispenser firmware will now be updated. Note the change in status messages at bottom of screen - "Opening Dispenser" and "Busy".



STEP 5

When prompted, disconnect the load cable from the dispenser. Select <OK> when completed.



STEP 6

There will be a six (6) second pause. When prompted, reconnect the load cable to the dispenser. Select <OK> when completed.

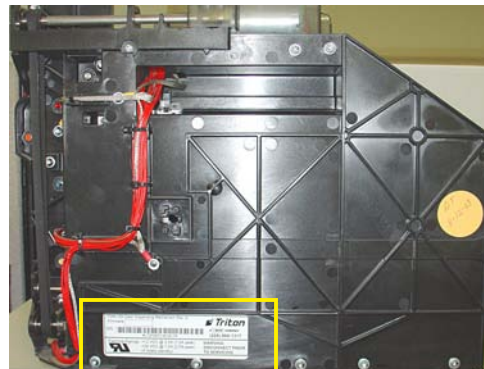
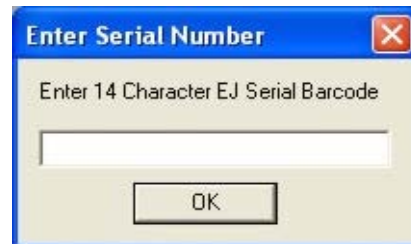


STEP 7

Enter the fourteen (14) character Electronic Journal (EJ) serial barcode.

EX: LTDM1234567890 (upper case characters)

Note: The code is located on the label affixed to the dispenser. Select <OK> when completed.



TDM FIRMWARE UPDATE PROCEDURES

STEP 8

A prompt will display the update firmware version was successfully loaded (either 2.XX/1.XX, 6.XX/5.XX, or 10.XX). Select <OK> when completed.



STEP 9

Power down the unit. Next, remove the load cable from the dispenser. Reconnect the dispenser data cable.

