



TDM ANTI-STATIC BRUSH KIT

(FOR MODELS 9100/RL2000/RL5000/RT2000)

TDN 07103-00172 Rev B 04/2008

CORPORATE HEADQUARTERS:

522 E. Railroad Street
Long Beach, MS 39560
Phone: (228) 868-1317
Fax: (228) 868-0437

COPYRIGHT NOTICE

© 2007 -2008 Delaware Capital Formation, Inc. All Rights Reserved. Triton Systems of Delaware, Inc. is an operating company of Dover Electronics, Inc., a subsidiary of Dover Corporation (NYSE-DOV). DOVER, the DOVER logo and the Dover family of marks and TRITON, the TRITON logo and the Triton family of marks are registered trademarks of Delaware Capital Formation, Inc., a wholly owned subsidiary of Dover Corporation.

TDM ANTI-STATIC BRUSH KIT

INTRODUCTION

This page covers the steps for installing anti-static brushes for units listed that employ TDM dispensers (Model 9100/RL5000/RL2000). Brushes will be mounted to the bill tray assembly (inside cabinet door).

TDM Anti-Static Brush Kit (P/N 06100-00120) Tools Required: None	
Part Number	Description
04003-00205	Brush, Anti-Static, 150mm x 11.5mm
07103-00172	TDM Anti-Static Brush Kit Installation

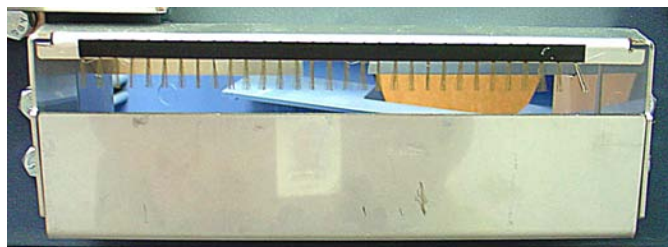


Anti-Static brush

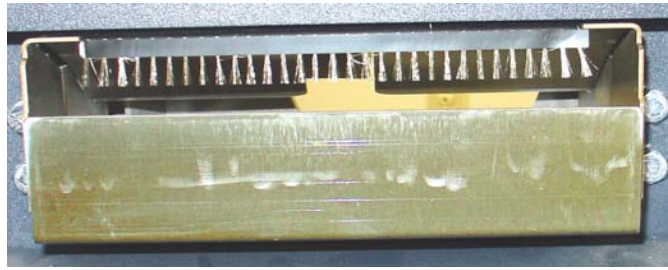
Lightly place/align the adhesive-backed brush on the bill chute flanges as shown below (brushes should be visible through opening). Once aligned, apply pressure to the black-strip to seal/secure the static brush.

Model 9100/RL5000

➤ If the bill tray looks like the one pictured below, place the anti-static brush on upper flange (*centered, brushes down*)

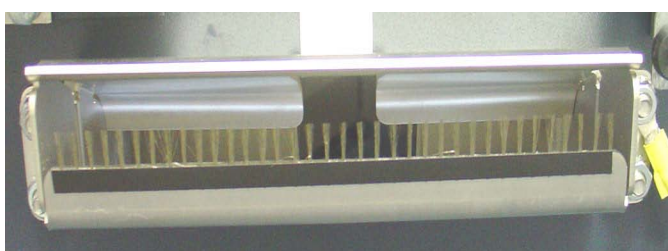


➤ If the bill tray looks like the one pictured below, place the anti-static brush *across* upper flange (*brushes down*).



Model RL2000

Place anti-static brush on lower bill tray shown in figures below (*bottom flange - brushes up*)

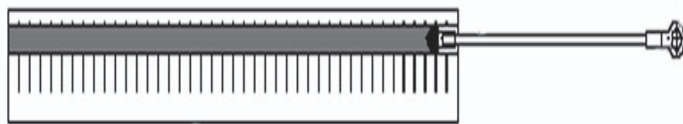


TDM ANTI-STATIC BRUSH KIT

INTRODUCTION

This page covers the steps for installing the anti-static brush with ground wire on TDM dispensers employed in Model RT2000 units. Brushes will be mounted to the “throat” extension on the TDM dispenser.

TDM Anti-Static Brush Kit w/Ground Wire (P/N 06200-00332) Tools Required: #T-20 Torx	
Part Number	Description
04003-00208	Brush, Anti-Static, w/Ground Wire
07103-00172	TDM Anti-Static Brush Kit Installation



Anti-Static brush w/ground wire

Note: *If your TDM dispenser has the Extension Latch installed, open the latch shown in figure below.*



- ➔ Peel and lightly place/align the adhesive-backed brush (brushes down) above the currency exit slot shown in Figure 1. Once aligned, apply pressure to the black-strip to seal and secure.
- ➔ Using a #T-20 Torx driver, remove the screw shown in Figure 2 and attach the static brush ground lug with the existing ground wire. Secure both grounds on side of Billfish.



Figure 1. Place brush above currency exit slot.

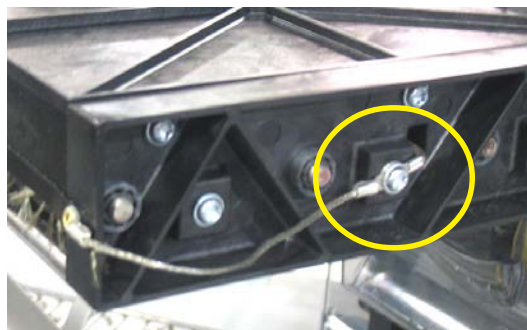


Figure 2. Static brush ground wire secured.

- ➔ Rotate the extension latch back up and secure, if applicable.