



**Lobby Unit Return Packing
ARGO, RL16, RL2, RL5**

TDN 07103-00259

March 26, 2015

CORPORATE HEADQUARTERS:

21405 B Street
Long Beach, MS 39560
Phone: (228) 575-3100
Fax: (228) 575-3101

COPYRIGHT NOTICE

© 2015 Triton. All Rights Reserved. TRITON logo is a registered trademark of
Triton Systems of Delaware, LLC

LOBBY UNIT RETURN PACKAGING

Tools Required: 9/16th socket

KIT P/N: 06100-08146—ARGO, RL16, RL2, RL5 Lobby Unit Return Packing Kit

PARTS SUPPLIED IN KIT

	Description	Quantity
1	Universal RL International 32" X 24" pallet	1
2	Bolt, 3/8-16 X .75, Hex Bolt	4
3	Washer 1/2 Inch ID x 1 1/4 Inch OD Flat Zinc Steel	4
4	Nut 3/8"- 16 T-Nut ROHS	4
5	Foam, 1/16" x 48" x 600' Roll with Adhesive	1
6	Small Clear Plastic Bag 27x19x79	1

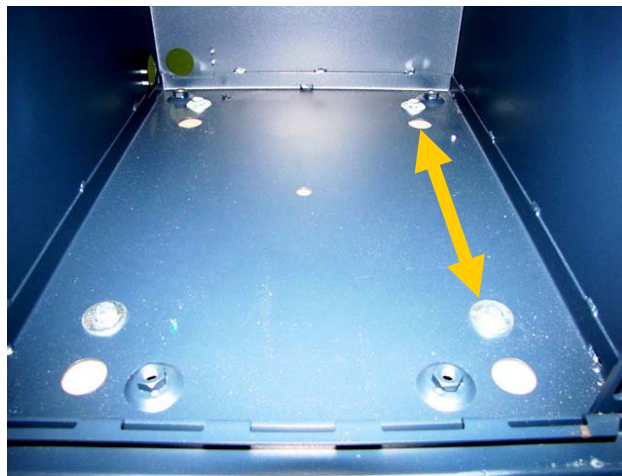


Document Updates:

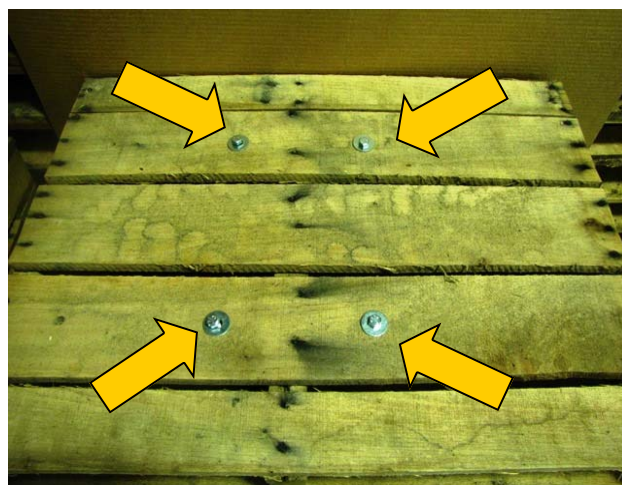
March 26, 2015.....Original

1. To determine which 4 holes the T-nuts will be inserted into, measure the distance between the openings shown in figure 1.

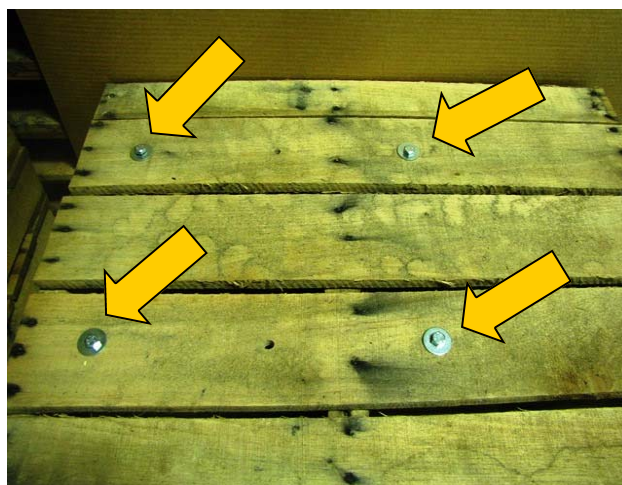
You should have either 7 1/4" or 14 3/4".



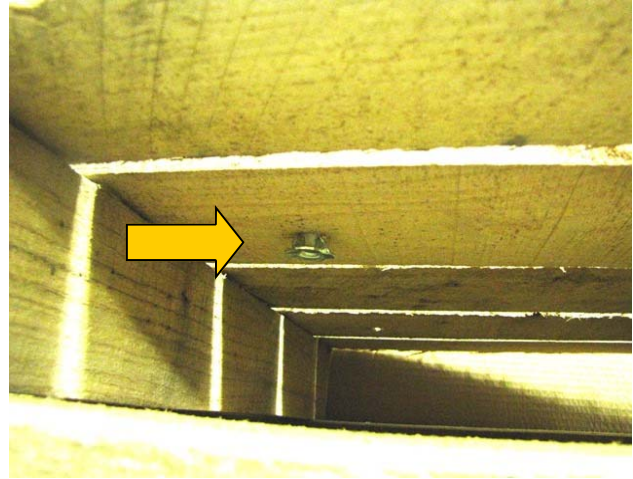
2. **For 7 1/4"**: Install the T-nuts in the 4 center locations shown in figure 2



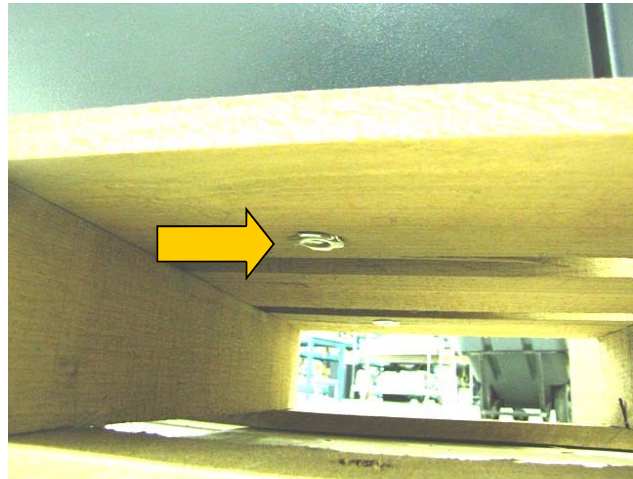
3. **For 14 3/4"**: Install the T-nuts in the 4 outer locations shown in figure 3



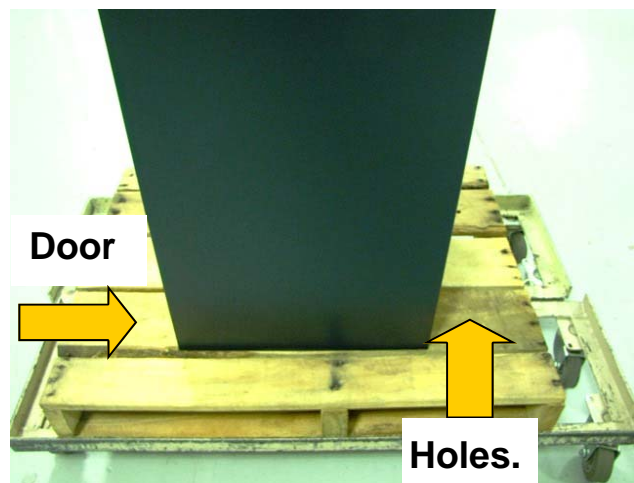
4. To install the T-nuts, insert them from the bottom of the pallet. (Figure 4)



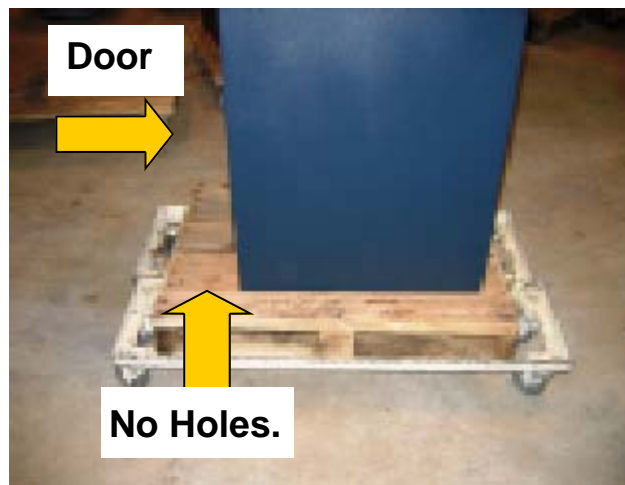
5. Using a 9/16th socket and the bolt with washer, tighten the bolt to pull the spikes of the T-nut into the wood. (Figure 5)
Remove the bolts and washers.



6. **For 7 1/4" Only:** Place the unit onto the pallet with the door facing away from the holes. (Figure 6)
Note that the two holes not used are on the back side of the cabinet.



7. **For 14 3/4" Only:** Place the unit onto the pallet with the door towards the area with no holes. (Figure 7)



8. Line up the four bolt openings (Figure 8) with the four holes in the pallet. Use the 4 bolts and four washers to secure it to the pallet.



Figure 8

9. Close the door and fascia. Lock the fascia and remove the keys. (Figure 9)



10. Lock the control panel and remove the keys. (Figure 10)



11. Place the foam (Sticky side in.) over the control panel and fascia as shown in figure 11.



12. Place the plastic bag over the unit. (Figure 12) Pull it tight around the bottom of the cabinet and tie it in a knot. Place the keys into a shipping envelope and attach them to the outside of the bag.

